

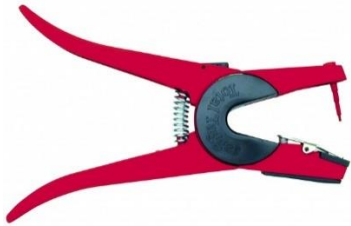
# **NEBRASKA 4-H & FFA EID TAGGING**

## **TIPS & GUIDELINES**

In an effort to remain on the forefront of animal identification standards nationwide, Nebraska 4-H and FFA have partnered, along with the Nebraska State Fair and Nebraska Department of Agriculture to institute use of electronic identification (EID) tags in some animals bound for exhibition at the Nebraska State Fair. The following should help in the proper use and application of these tags.

### **1. Applicators/Taggers**

For best results, use the **Allflex Universal Total Tagger (Red) with the red blunt pin.** One is pictured below for your reference.



- The EID Ultra Retract-O-Matic™ (Orange) will also work to apply EID tags.
- **DO NOT** use the Global Retract-O-Matic™ (Blue) to apply tags without having first ordered a conversion kit from Allflex. (Conversation Kit is approximately \$26)
- The Universal Total Tagger can be utilized for EID tags pertaining to all species (beef, swine, sheep and goats).

\*See Allflex's website for more information or to order the proper tagger and accessories:

<http://allflexusa.com/our-products/new-product-group/>

### **2. EID Buttons and Visual Tags**

All orders contain two matching pieces, the EID tag and the Visual Tag – **Keep Matched EID and Visual Tags Together!**

- Included are 2 sets of labels in each bag that have the EID tag barcode, (a 15 digit number) and the visual tag number. One set can be used at a mass tagging day to identify which set were distributed to exhibitors/families. This is useful for county record keeping.
- The other set of labels can be used for State Fair/AKSARBEN nominations. Labels can be added to the DNA envelope of a particular animal.
- It is the responsibility of all parties (exhibitor, family members, and Extension/FFA staff) ensure the proper EID information is affixed to the corresponding DNA. These records will become final after verification by Extension and/or FFA staff.

**REMINDER: The Visual Tag number MAY NOT match the last digits of the 15-digit EID**

You can download a list of matching numbers from the Allflex website: <http://www.allflexlink.com/> (the last page also has further instructions).

### 3. Ear Tag Placement

- Before ear tagging takes place it is important to **USE DISINFECTANT** to dip the tags and applicator in. It is recommended that you use a product such as Nolvasan™ and it can be purchased from the local veterinarian or farm supply store. It is an effective, non-irritating product. Do NOT use a product that irritates the ear. This causes rubbing and increases loss of tags.
- It is recommended that EID tags be placed in the animals **LEFT EAR**. It is **required** that the EID button be placed on the inside of the animals ear, with the Visual Tag facing outward on the backside of the ear. They should be placed close to the head (1/4th to 1/3rd of the ear length out from the base) and in the middle of the ear vertically.

**\*Remember to remove the black insert on the bottom of the Allflex Universal Total Tagger, before loading applicator.** Click on Video link to see how to remove black insert – you will need a Media Player.

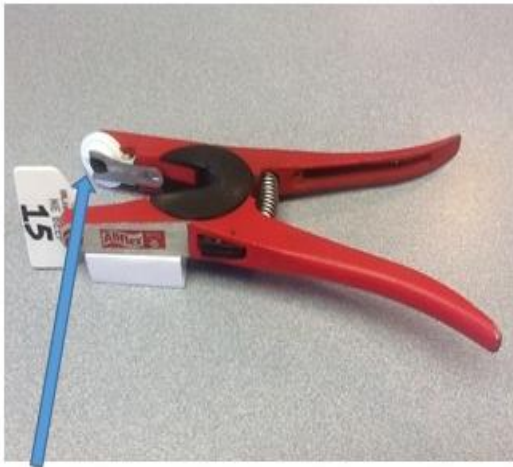


**AVOID placing tags in existing holes in the ear, as this greatly increases the chances of losing the tag.**

- After application, the EID button should spin freely while the Visual Tag is held. If not, the male stem was not pushed far enough into the EID tag.

**If Animal Already has an EID Tag DO NOT REMOVE IT.** Record the EID number and place a “County Only” Visual Tag in the ear. This combination will serve as the “Matched Pair Set” for that particular animal.

## Tag Loading and Application Instructions



Align the arrow on back side of the RFID and the bump on the front side of the RFID to the front of the tagger.



The Allflex TotalTagger loaded and ready to go!



The NE BEEF and Tag Reference Number go on the back of the beef's left ear.



The 840 EID RFID body goes on the front of the beef's left ear right under the ear hood. Watch for ribs or veins.



Proper placement of both the EID and Reference back tag in the middle region of the inner third of the left ear of the beef animal



## Recommended EID Tag Placement for Cattle

Application site must be free of foreign debris prior to placement of tags on the animal. Review application instruction prior to tagging.

1. The EID tag should be placed in the middle of the ear between the two cartilage ribs close to the head.
2. The female portion of the tag should be on the inside of the ear with EID tag application. Note that this is a thicker part of the ear. Application may be more difficult than when applying a visual tag.
3. **IMPORTANT:** Caution, "Free Air Space" is critical for proper healing and retention. Inspect placement after tagging to insure there is sufficient space between ear and EID tag.

## Recommended EID Tag Placement

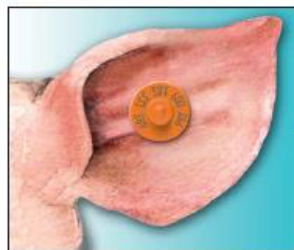


Application site must be free of foreign debris prior to placement of tags on the animal. Review application instruction prior to tagging.

**IMPORTANT:** Caution, "Free Air Space" is critical for proper healing and retention. Inspect placement after tagging to ensure there is sufficient space between ear and EID tag.

### FOR CATTLE

1. The EID tag should be placed in the middle of the ear between the two cartilage ribs close to the head.
2. The female portion of the tag should be on the inside of the ear with EID tag application. Note that this is a thicker part of the ear. Application may be more difficult than when applying a visual tag.



### FOR SWINE

1. Place the EID tag in the middle or thicker part of the ear.
2. The male tag should be on the outside of the ear and the female (or EID tag) should be placed on the inside of the ear. Tag retention is improved when male tag lays flush against the back side of the ear.

**IMPORTANT:** Tag application may vary based on breed type and ear size.



### FOR SHEEP

1. Place the EID tag in between the cartilage ribs of the ear, near the first quarter of the ear (closest to the head).
2. The female portion of the tag should be placed on the inside of the ear.



## Easy Steps Tag/TSU • Lookup User's Guide

### Finding Your Tag/TSU Numbers

**Step 1.** Navigate to [www.allflexusa.com](http://www.allflexusa.com) and Find Tag or TSU Numbers.



**Step 3.** You may also enter **Multiple Bag#s**. Hit <enter> between the bag#s or copy and paste a list from a text or Excel file

**Step 4.** Click on Lookup

**Step 5.** The numbers you entered will show **green** on the grid after you click on Lookup, as shown  
You are now ready to download your numbers  
You can expand the **green** rows and see details by clicking on the plus sign  
Only rows selected in **green** will be downloaded

	Bag#
+	1000029338
+	1000029349
+	1000029350
+	1000029361
+	1000029372
+	1000029383

**Step 2.** Locate the Master#, Pallet#, Case#, Bag# or Tag# on labels as shown and enter them individually

#### Easy Step Instructions

Enter Master#, Pallet#, Case#, Bag# or Tag# or enter multiple bag numbers.

Master#, Pallet#,  
Case#, Bag# or Tag#

C1000228330

Multiple Bag #s

1004374780  
1004374791  
1004374805  
1004374816  
1004374827

Lookup



\* = **Bag(s) Not Found**

Master#, Pallet#,  
Case#, Bag# or Tag#

Multiple Bag #s

1000029338  
1000029349  
1000029359\*  
1000029361  
1000029372

Lookup

**Bag(s) Not Found**  
Bag(s) Not Found are marked with an \* in the list. You can fix the entry and re-submit by clicking Lookup and/or proceed with the selection

### Downloading Your Tag/TSU Numbers

#### Step 6.

Select the file type and format in which you would like your numbers to be saved.

**CSV = comma separated value**  
**XLS = Excel spreadsheet**  
**XML = web document**

Select File Type and  
Format and Click  
Download

CSV  XLS  XML

Original

The selected format contains:  
Bag#, Eid#, Mgmt#, Reg#

Download

#### Step 7.

Click download and open or save to your computer

