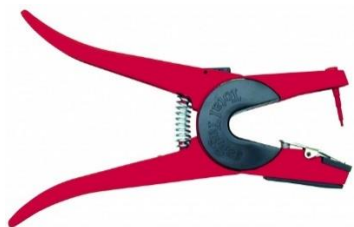


NEBRASKA 4-H & FFA EID TAGGING

TIPS & GUIDELINES

In an effort to remain on the forefront of animal identification standards nationwide, Nebraska 4-H and FFA have partnered, along with the Nebraska State Fair and Nebraska Department of Agriculture to institute use of electronic identification (EID) tags in some animals bound for exhibition at the Nebraska State Fair. The following should help in the proper use and application of these tags.

1. Applicators/Taggers



- The EID Ultra Retractable-O-Matic™ (Orange) will also work to apply EID tags.
- **DO NOT** use the Global Retractable-O-Matic™ (Blue) to apply tags without having first ordered a conversion kit from Allflex. (Conversion Kit is approximately \$26)
- The Universal Total Tagger can be utilized for EID tags pertaining to all species (beef, swine, sheep and goats).

*See Allflex's website for more information or to order the proper tagger and accessories:

<http://allflexusa.com/our-products/new-product-group/>

2. EID Buttons and Visual Tags

All orders contain two matching pieces, the EID tag and the Visual Tag – **Keep Matched EID and Visual Tags Together!**

- It is the responsibility of all parties (exhibitor, family members, and Extension/FFA staff) ensure the proper EID information is affixed to the corresponding DNA. These records will become final after verification by Extension and/or FFA staff.

REMINDER: The Visual Tag number MAY NOT match the last digits of the 15-digit EID

You can download a list of matching numbers from the Allflex website: <http://www.allflexlink.com/> (the last page also has further instructions).

3. Ear Tag Placement

- Before ear tagging takes place it is important to **USE DISINFECTANT** to dip the tags and applicator in. It is recommended that you use a product such as Nolvasan™ and it can be purchased from the local veterinarian or farm supply store. It is an effective, non-irritating product. Do NOT use a product that irritates the ear. This causes rubbing and increases loss of tags.
- It is recommended that EID tags be placed in the animals **LEFT EAR**. It is **required** that the EID button be placed on the inside of the animals ear, with the Visual Tag facing outward on the backside of the ear. They should be placed close to the head (1/4th to 1/3rd of the ear length out from the base) and in the middle of the ear vertically.

***Remember to remove the black insert on the bottom of the Allflex Universal Total Tagger, before loading applicator.** Click on Video link to see how to remove black insert – will need a Media Player.



AVOID placing tags in existing holes in the ear, as this greatly increases the chances of losing the tag.

- After application, the EID button should spin freely while the Visual Tag is held. If not, the male stem was not pushed far enough into the EID tag.

If Animal Already has an EID Tag DO NOT REMOVE IT. Record the EID number and place a “County Only” Visual Tag in the ear. This combination will serve as the “Matched Pair Set” for that particular animal.

Tag Loading and Application Instructions



Align the arrow on back side of the RFID and the bump on the front side of the RFID to the front of the tagger.



The Allflex TotalTagger loaded and ready to go!



The NE BEEF and Tag Reference Number go on the back of the beef's left ear.



The 840 EID RFID body go on the front of the beef's left ear right under the ear hood. Watch for ribs or veins.



Proper placement of both the EID and Reference back tag in the middle region of the inner third of the left ear of the beef animal



Recommended EID Tag Placement for Cattle

Application site must be free of foreign debris prior to placement of tags on the animal. Review application instruction prior to tagging.

1. The EID tag should be placed in the middle of the ear between the two cartilage ribs close to the head.
2. The female portion of the tag should be on the inside of the ear with EID tag application. Note that this is a thicker part of the ear. Application may be more difficult than when applying a visual tag.
3. **IMPORTANT:** Caution, "Free Air Space" is critical for proper healing and retention. Inspect placement after tagging to insure there is sufficient space between ear and EID tag.

Recommended EID Tag Placement

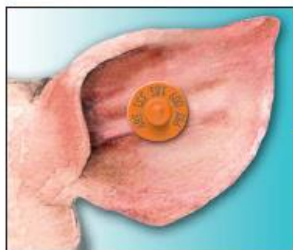


Application site must be free of foreign debris prior to placement of tags on the animal. Review application instruction prior to tagging.

IMPORTANT: Caution, "Free Air Space" is critical for proper healing and retention. Inspect placement after tagging to ensure there is sufficient space between ear and EID tag.

FOR CATTLE

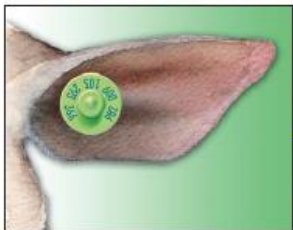
1. The EID tag should be placed in the middle of the ear between the two cartilage ribs close to the head.
2. The female portion of the tag should be on the inside of the ear with EID tag application. Note that this is a thicker part of the ear. Application may be more difficult than when applying a visual tag.



FOR SWINE

1. Place the EID tag in the middle or thicker part of the ear.
2. The male tag should be on the outside of the ear and the female (or EID tag) should be placed on the inside of the ear. Tag retention is improved when male tag lays flush against the back side of the ear.

IMPORTANT: Tag application may vary based on breed type and ear size.



FOR SHEEP

1. Place the EID tag in between the cartilage ribs of the ear, near the first quarter of the ear (closest to the head).
2. The female portion of the tag should be placed on the inside of the ear.