

4-H Family Newsletter - June/July 2024

Month Events/Deadlines

- June 1
State Horse Show Online
Entry Deadline
- June 3
Growing Clovers Club Mtg.
6:00 pm @ Extension Office
- June 5-7
Regional Jr. Camp @
Whispering Cedars, Genoa
- June 14
State Fair ID/DNA Deadline
- June 15
County Fair Online Entry
Deadline
- June 17
4-H Council Meeting 8 pm
@ Extension Office
- June 17-18
State 4-H Premier
Communication Event @
Lincoln
- June 19
Juneteenth Day – Office
Closed
- June 20-21
PASE @ UNL East Campus
- June 26
Fair Superintendent Meeting
8 pm @ Ag Park Club Room

Staff

Sheila Hoppe	Kelly Feehan
Kimberly Johnson	Beth Jones
Blake Wert	Sandra Swanson

Office Hours:

Monday – Friday
8:00 a.m. – 5:00 p.m.

4-H & FFA ONLINE FAIR ENTRY DEADLINE SATURDAY, JUNE 15

Website for 2024 Platte County Fair online entries is:
<https://plattene.fairwire.com/>. Instruction sheet enclosed in newsletter.

\$10.00 fee per exhibitor for all late entries between June 17-20 deadline.
Must contact Extension Office for late entry worksheet. No entries will be
accepted after 5:00 p.m. on Thursday, June 20th.

Due on Friday, June 14th - Stall Reservation form accompanied by
payment, Hay Bale Decorating Contest and Club Booth reservation.
All forms must be dropped off at Extension office.

84th Annual Platte County Fair July 10 – 14, 2024

Open 4-H Horse Show

June 30, 2024 @ 9:00 a.m. - Ag Park Indoor Arena

Pen of 3 Show

July 2, 2024 @ 9:00 a.m. - Columbus Sales Pavilion

Archery Shoot

July 2, 2024 @ 6:00 p.m. - Ag Park Indoor Arena

Check Platte County Fair Premium Book for a schedule of all fair activities,
check-in times, show times, etc. or check it out on the web at
<https://platte.unl.edu>.

FAIR SUPERINTENDENT MEETING

The fair superintendent meeting will be held on Wednesday, June
24 at 8:00 p.m. at the Club Room Ag Park, Columbus. With new 4-H staff
and different location of static exhibits, **we highly encourage all
superintendents to attend the meeting** to discuss, make final plans,
and assign jobs at the fair.

4-H OFFICE MOVING TO FAIR OFFICE

The 4-H division of the Extension Office will be moving to the fairgrounds to begin fair preparations on Tuesday, June 25.

Starting the morning of Wednesday, June 26, all 4-H questions can be addressed to the 4-H Fair Office at 402-564-7712.

STATIC ENTRY CARDS

Entry cards will be available for pick up on Monday, June 24 at 1:00 p.m. at the Extension Office by club leaders and members of Platte County Independent Club. Cards will move to the 4-H Fair Office at Ag Park (NOT the Extension Office) on Wednesday, June 26 starting at 8:00 a.m.

Entry cards must be attached to all static exhibits prior to entering exhibits on Monday and Wednesday of County Fair.

DON'T FORGET

Chevron (4-H Patch) - All 4-H'ers are to wear a chevron when presenting in front of a judge at the fair. Cost \$2.00

Armbands - Horse exhibitors are required to wear an armband with their proper attire. Cost \$2.00

4-H T-shirt - Whether it is the gray County t-shirt, a club t-shirt or the free exhibitor t-shirt can be worn in replacement of the Chevron.

All items are available at the Extension Office or 4-H Fair office when open.

Check the Platte County Fair Premium Book for additional Dress Code Rules and Regulations.

RESOURCES FOR EXHIBITING AT FAIR

There are lots of resources available to families to help them prepare and exhibit at the fair. They are available at <https://platte.unl.edu> under Platte County 4-H tab, Platte County Fair 10-14, 2024.

Make sure you check out the following for the Platte County Fair:

- How 4-H Clover Kids Participate
- How to Exhibit 4-H Static Exhibits
- How to Exhibit 4-H Livestock Exhibits
- Platte County 4-H Fashion Show Manual
- Modeling/Fashion Show Narration Forms
- Platte County 4-H Favorite Foods Revue Manual (table setting)
- Preparing Cut Flowers
- Selecting and Preparing Vegetables, Herbs and Fruits
- **(NEW)** Home Design & Restoration Supporting Information
- **(REVISED)** Visual Arts Supporting Information
- Clothing Design Data Card
- **(NEW)** Crochet & Knitting Data Cards
- Food Preservation Labeling Cards
- Photography Photo Data Tag Template
- Archery Shoot Guidelines

4-H Robotics Camp July 29 – 30

At Extension Office

Registration flyer enclosed in this newsletter.



PLANT & INSECT CONTESTS

4-H Plant and Insect Contest Day is June 27 at Club Room, Ag Park in Columbus. Mark your calendars!

Contests held are Horticulture Judging and ID, Tree ID, Grass and Weed ID and Insect ID. You can participate in one, two or all four. Your choice based on your interests.

For information on contests, contact kfeehan2@unl.edu. Registration flyer enclosed in this newsletter.



Office Closed – Wednesday, June 19



8:00 p.m. on Thursday
August 10, 2024

State Fair On-line Entry Deadline for:
All Animals
All Contests
Fashion Shows

(4-H'ers exhibiting in the above State Fair categories will be responsible for data entering their own exhibits online by deadline. More information in August 4-H newsletter.)

4-H Animal Talk



Pen of 3 Show- The Pen of 3 Show is Tuesday, July 2nd at the Sale Barn. Don't Forget- We would like to know how many pens you are bringing, so we can line up enough trucks. We will weigh the cattle on Monday, July 1 from 7-8:30 pm. Each exhibitor will need to pick up a form at weigh-in and fill it out to be given to the judge during the show. The form will ask for your pen of three tag numbers, beginning weights, ending weights, rate-of-gain, origin of the calves (home-raised or purchased), and any other information the exhibitor wants to share with the judge.

Platte County Showmanship Clinic- Plan to attend this hands-on multi species clinic to learn how to show or to gain tips to help improve your animal showing for county fair and beyond! 4-H'ers are encouraged to bring their own animals, but it is not required! The cost for this clinic is \$5/youth. Prepayment is required. Payment can be dropped off at the Extension Office or mailed to us! Preregistration is due June 18th. To register or for more information reach out to Blake Wert at 402-563-4901 or bwert3@unl.edu.

Progress Shows and Clinics- Visit our website to find livestock progress shows, animal shows and clinics in the area! Information can be found at <https://extension.unl.edu/statewide/platte/educational-programs/platte-county-4-h/>

County Fair Reminders:

Animal Exhibitor Handbook- Reference the handbook for new information about 2024 changes, the livestock sale, and more! If you have any questions, contact the Extension Office at 402-563-4901.

Herdsmanship- A reminder Herdsmanship will not be judged during the show of any given species.

Stall Reservation Form Reminder- Exhibitors showing Beef, Dairy, Goat, Horse, Poultry, Rabbit, Sheep, and Swine will need to complete a Platte County Fair Stall Reservation Form. All 4-H & FFA animals penned at the fair must be recorded on this sheet so the amount of pens/stalls required can be determined. The stall reservation form will be due on **Friday, June 14 at 5 pm with payment.**

Fair Entry Deadline- Fair entry deadline is **Saturday, June 15th** and is completed online. Don't forget, fair entries received after 11:59 pm on June 15th until Noon on June 20 will have a late fee of \$10.00 per exhibitor. Contact Sandra at the Extension Office regarding late entries. After June 20th, late entries will not be accepted! Get your entries in early! How-to instructions are included in this newsletter.

Showmanship and Record Books- A reminder, exhibitors for all animal areas except small animals, rabbits, and poultry will be required to have record books to complete and turned in at County Fair during check-in or the exhibitor will be dropped a ribbon placing in showmanship. All livestock exhibitors are expected to participate in at least one or more showmanship contests.

Livestock Sale- The Platte County Fair Livestock Sale is on Sunday, July 14th at 1:00 pm! The sale is terminal. Make sure to withdraw any animal you don't want harvested! This needs to be done by completing the paperwork at the 4-H Fair office by 1:00 pm on Saturday, July 13. After 1:00 pm, it will be \$100 to withdraw your animal. See the Animal Exhibitor Handbook for more information!

Sheep/Goat Reminder- Lots have changed from 4 to 3 for the Livestock Sale only!

Round Robin- Only Senior Division Showmanship winners may qualify for the Round Robin Competition. Previous Round Robin winners will not be eligible for Round Robin for the same species in the future. The previous winners will be recognized at the current Round Robin event. If the Grand Champion Showman is ineligible, the Reserve Champion will be selected to participate.

4-H and Clover Kid Obstacle Course- To view the obstacle course layouts for Bucket Calf, Goat, and Sheep visit: <https://extension.unl.edu/statewide/platte/platte-county-fair-july-10-14-2024/>. The links will be close to the middle of the page when scrolling.

Manure Dumpsters- There will be two manure dumpsters present during fair week. One will be in the original spot on the southeast corner of the arena building. The second dumpster will be on the south side of the green barn. Note: Please make sure to dump the manure inside and towards the front of the dumpster!

Fit/No-fit Divisions- There is no longer a fit and non-fit division. Youth will be allowed to decide if they want to show their animal as fit or non-fit.

Sheep Show- Breeding Ewes will be split by weight.

State Fair DNA- All market and breeding animals along with feeder calves will have to pull DNA for State Fair nominations. Please turn in your completed & filled DNA envelopes to the office by the June 14th deadline.

Dates to Remember:

June 14	State Fair Beef, Goat, Sheep, Swine and Feeder Calf ID and DNA Envelope Deadline. EID Tags and DNA Envelopes are available at the Extension Office. EID tags cost \$2.53 each for beef and \$2.74 each for swine.
June 14	Stall Reservation Forms DUE!
June 15	County Fair Entry Online Deadline via https://plattne.fairwire.com/ State Fair beef, Breeding Animals, Goat Sheep, and Swine online nomination deadline at https://showstockmgr.com/
June 20-21	PASE Contests in Lincoln. This includes Livestock Judging, Skillathon, and Poultry Judging.
June 22	Platte County Showmanship Clinic @ Ag Park
July 13-17	Fonner Park State 4-H Horse Show in Grand Island, Nebraska

Livestock Judging Contest in Leigh

Platte County was represented very well on May 23. Job well done to all the youth!

Kolyns Wilke - 3rd High Junior
Chloe Faltys - 8th High Junior
Brooke Kreikemeier - 10th High Junior

Briggs Klug - 2nd High Intermediate
Kenna Dicke - 3rd High Intermediate

Calli Reichmuth - 12th High Senior
Sierra Reardon - 13th High Senior



On-line Entry for the Platte County Fair

We recommend printing these instructions for use during registration.

If you have questions about rules or the registration process related to departments, divisions, classes, required ID numbers, affidavits, or paperwork, please consult the current year Platte County Fairbook and/or Platte County 4-H Animal Exhibitor Handbook.

**Entry
Deadline
Saturday, July 15**

If you have lost your password, please click the "Forgot your password?" link on the registration screen. The system will send a message containing your password to the e-mail address you previously provided. If you have any other technical difficulties with the online registration, please call the Platte County Extension Office at 402-563-4901 or email platte-county@unl.edu.

Step 1. Register

To begin registration, go to <https://plattene.fairwire.com>

Click on Sign In at top right. Choose a login type:

To register one exhibitor, choose Exhibitor. Go To Step 2.

To register multiple exhibitors, choose Quick Group.

Quick Group users only: Quick Groups are useful for families with multiple exhibitors.

To create a Quick Group, enter a username and password for your group. Write them down so that you can log in again later to add exhibitors or entries or to view your registration history. You may choose a **Default Club**. The default club will automatically appear for each exhibitor and entry on later screens. Please note that as you add exhibitors and entries, you may need to change from the default club if registering both FFA and 4-H exhibits. NOTE: If exhibitor showing both 4-H & FFA, do not create a new registration for both, just change club for each entry.

Now proceed with the instructions below for each exhibitor in your Quick Group. In the future, you may enter the site again with either your Quick Group name and password or the login information for any individual exhibitor in your group.

Step 2. Entries

- Choose a **Department** for your first entry. Choose a Department name for each entry.
- Then choose a **Division** for the entry. It may be helpful to consult the fairbook when choosing Divisions.
- Then choose a **Class** and complete other required boxes.
- You must select a **Club** for each entry.
- Click the **Add Entry to Cart** button.
- You may now add another entry:
 - Add different entry** is for adding another entry in a different Department.
 - Add similar entry** is an easy way to add another exhibit in the same Department.

Repeat the steps above for each entry. Note that you may add many types of entries without logging off. Remember that if you are using the Quick Groups option, you may need to change from a default club as you add entries.

Once all entries have been completed, click **Continue**.

Step 3. Review

Review your entries and additional items for accuracy. Before checking out, you may add more entries and save this cart and log in to add more entries later. Note that your cart and login information are not saved until you click **Save This Cart**. Your exhibits are not registered until you click **Check-out**.

Quick Group Users: You may now click the button **Add Entries for a different Exhibitor**. This will take you back to Step 1 in order to create a new exhibitor within your Quick Group. Once you are done entering all group members, you can click **Check-out** to check out for all of your exhibitors at once. Remember that if you are using the Quick Groups option, you may need to change from the default club as you add entries.

Step 4. Confirm

Type **"Yes"** in the red dashed box to indicate that you agree with 4-H, FFA and Nebraska State Fair rules and regulations. See the links below for this information. Click **Submit**.

Review your summary of entries and additional items. You may print and request an e-mail of the receipt. If everything is correct, click **Finish**.

You may review your previous transactions and view your profile by clicking on your name in the top right hand corner of the page.

Congratulations! You are registered for the Platte County Fair.

Platte County Fair Challenge Project: Wooden Pallet

If you have created an exhibit to participate in the 2024 Platte County Fair Challenge Project... please print and attach one of these tags to your project, along with your other tags for the project.

Remember project should follow a class from the fairbook in which it fits into. This is a separate challenge by creating an exhibit using the special challenge material.

Your Challenge Project will be located in a special booth at fair with all other Challenge Projects.





YOUTH ROBOTICS CAMP



JOIN US **JULY 29TH & 30TH**

- WELCOME TO ALL SKILL LEVELS
- CREATE AND CODE A ROBOT
- BUILD PROBLEM SOLVING SKILLS
- LEARN TO THINK LIKE AN ENGINEER

Ages 5-10

**9:30-
11:30AM**

Ages 8-14

**9:30-
3:00PM**

Admission

\$25

Ages 5-10

\$35

Ages 8-14

Explore - Ages 5-10

- ✓ Build a robot from scratch
- ✓ Learn basic coding skills
- ✓ Use motors and sensors
- ✓ Team building activities

Challenge - Ages 8-14*

- ✓ Build a robot from scratch
- ✓ Learn various coding skills
- ✓ Use motors and advanced sensors
- ✓ Compete in a mock competition

BRING LUNCH EACH DAY*

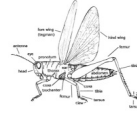
- Make checks payable to "Platte County 4-H Robotics Club"

- Send or drop off registration form and fee to the 4-H Extension: 2715 13th St, Columbus, NE

Registration Deadline: July 22nd



4-H Plant and Insect Identification Contests



*If you like plants and/or insects, here's an opportunity to build skills and have fun too!
Attend to participate in one, two, three or all four contests!*

Your interest - your choice! Bring a friend too!

4-H'ers could earn a trip to a state and/or national contest!

Thursday, June 27, 2024

Agricultural Park Exhibit Hall Club Room, Fairgrounds - 822 15th Street, Columbus NE

(Entrance to Ag Park is at intersection of 10th Av. and 15th St.)

Approximate Times after Initial Contest

12:15 – Welcome and Instructions

12:30 PM – Grass and Weed Identification

1:30 PM - Entomology (Insect) Identification

2:30 PM – BREAK with Refreshments

2:45 PM - Horticulture Judging and I.D.

3:45 PM - Tree Identification

PLEASE BRING A CLIP BOARD TO USE DURING THE CONTEST

Identify plant/insect samples for each contest. For horticulture, there is also 2 judging classes (vegetables, fruits, flowers, or nursery stock). Informational materials available at <https://4h.unl.edu/fairbook/contests>. For questions, contact your local Extension office or Kelly Feehan at kfeehan2@unl.edu or 402-563-4901.

Clip & return registration by Tuesday, June 25th to: UNL Extension, 2715 13th Street, Columbus, NE 68601

2024 Horticulture / Tree / Insect / Grass & Weed Contests Registration

Name/s: _____ Age as of Jan. 1, 2024: _____ Phone: _____

Address: _____ E-mail: _____

County: _____ Birth Date: _____

I plan to participate in: (please check **one** division and **all** contests you plan to participate in)

Division: _____ 4-H _____ FFA _____ ADULT (for parents)

Contest: _____ Horticulture _____ Tree ID _____ Insect ID _____ Grass/Weed ID

Age Divisions (age as of Jan. 1, 2024: Clover Kids: 5 - 7, Junior: age 8 – 10; Intermediate: age 11 - 13, Senior: age 14 - 18)

Tuesday, July 9, 2024
9:00 am - 3:00 pm
NCTA's Educational Center,
Curtis, NE



Farm Credit Services of America

8TH ANNUAL AGRONOMY YOUTH FIELD DAY



Two Different Age Tracts

Open state wide to ALL youth ages 9-18 as of 1/1/24. Parents and adults are welcome! FREE event with lunch provided by Ag Valley Coop.



Hands on Activities

- “Aerial Crop Scouting” using drones
- Insect/Arthropod Scavenger Hunt & Trapping
- GPS Soil Sampling
- Soil Lab Science
- Exploring Herbicides & Fungicides
- Practice Your Mini Drone Flying



Register Today!

Register online at go.unl.edu/agronomy-youth-field-day or by scanning the code by **July 2nd.**

For more information, contact Nebraska Extension-Frontier County at (308)367-4424 or email kathy.burr@unl.edu.



Nebraska Extension is a Division of the Institute of Agriculture and Natural Resources at the University of Nebraska-Lincoln cooperating with the Counties and the United States Department of Agriculture.

Nebraska Extension educational programs abide with the nondiscrimination policies of the University of Nebraska-Lincoln and the United States Department of Agriculture.©2024



JR. LEADERS FUNDRAISERS

Change Wars between 4-H clubs will be located outside the popstand in the arena.



BRING YOUR CHANGE AND DOLLARS TO COMPETE AND SUPPORT - COINS HELP THE CLUBS TOTAL - DOLLARS TAKE AWAY FROM THEIR TOTAL

PLATTE COUNTY JR. LEADERS WILL BE HOSTING 2 FUNDRAISERS DURING THE 2024 PLATTE COUNTY FAIR

In my 4-H Era T-Shirts will be available to purchase in the popstand for \$15 each.





4-H INNOVATIONS

SUMMER LIBRARY PROGRAM GRADES 4-6

DATES OF EVENTS:

June 5th: Adventure Cuisine

June 12th: Adventure Ahoy

June 19th: Gravity Eggventure

June 26th: Adventures in Reused Recon

July 3rd: Star- Spangled Adventure

July 10th: Adventure Wellness

July 17th: Adventure in Time Travel

July 24th: Adventure's Finale

EVENT PLACE:

Columbus Public Library
Creativity Corner

EVENT TIMES:

10:30am-11:30am

QUESTIONS? CONTACT:

Kelly Keyes, librarian:
402-564-7116

Shelia Hoppe, 4-H
Extension Educator:
402-563-4901





Clover Kid Show and Tell Wednesday, July 10th 6:00 pm

4-H Clover Kids exhibiting in the fair are invited to a Show & Tell experience on
Wednesday, July 10th at 6:00 pm.

Please check-in with exhibit they are sharing about near the stage upstairs in the Club Room at **5:45 pm** to sign up for a time slot. Clover Kids will be placed in small groups and brought on stage to tell more about an exhibit they brought to the fair.

**Ribbons and prizes will be awarded for participating!
Parents and grandparents are welcomed to watch!**

Nebraska Extension – Platte County
2715 13th Street
Columbus NE 68601-4916

