

DEPARTMENT D
ENVIRONMENTAL & EARTH SCIENCE
Superintendent: TBA



CONSERVATION, WILDLIFE & SHOOTING SPORTS

Conservation, wildlife and shooting sports gives 4-H members an opportunity to share their knowledge and field experience about conservation, wildlife, and shooting sports. When creating an exhibit make sure to take close account of the rules while taking into account the different laws that surround those areas.

RULES

1. Show What You Did and Learned: All exhibitors will show evidence of their personal field experiences, research or observations that relate to their exhibit. This helps judges understand what the 4-H'er did and learned in the process that led to the exhibit.

2. Proper Credit: Show proper credit by listing the sources of plans or other supporting information used in exhibits.

3. Whose Exhibit: The exhibitor's name, county, and age must be on the back or bottom of all displays.

4. Wildlife and Wildlife Laws: "Animal" or "wildlife" in the following classes includes wild fish, amphibians, reptiles, birds, or mammals. Please make sure you are following all wildlife laws.

5. Project Materials: Related project booklets include Exploring Your Environment Series, 4-H Shooting Sports, Amphibians, Bird Behavior (EC 59381), Fishing for Adventure Project Manuals, Wildlife Conservation (4-H 125), Geology, and Outdoor Adventure. Other resources include: Outdoor Skills: Learning Science in the Outdoors series (Science Signature Outcome Program) outdoornbraska.gov/afterschool/ and www.whep.org.

6. Board and Poster Exhibits: Mount all board exhibits on ¼" plywood, Masonite, or similar panel no larger than 24" high by 24" wide. Poster exhibits should be on regular poster sheets, no larger than standard size (22 by 28 inches) but half size, 22 by 14 inches, is recommended.

Eligibility: All static exhibits must have received a purple ribbon at the county fair to advance to the State Fair.

| | | | | |
|---------|--------|--------|--------|--------|
| PREMIUM | Purple | Blue | Red | White |
| | \$4.00 | \$3.75 | \$3.25 | \$2.75 |

HARVESTING EQUIPMENT

D343-001 Fish Harvesting Equipment (SF168) Board exhibit. Display of equipment used in fish harvesting.

Examples: fishing knots, hooks (with corks over ends for safety), lures. Label all items displayed. Include in your exhibit the following information: the purpose of each item, when or where each item is used and any personal experiences you've had with the item(s).

D343-002 Build a Fishing Rod (SF169) Rod building kits with instructions are available for this purpose. A fishing rod educational exhibit may not exceed 96 inches in length. Exhibit must be mounted on a board. Include with the exhibit: Explanation of cost of materials/components, where materials/components were purchased, and how many number of hours required for construction. Label all parts. Necessary components which must be included are grip, line guides (based on manufacturers specifications), guide wraps, and hook keeper. Reel seat needs to be aligned with guides, and guides aligned accurately down rod. Guide wraps of size A to D, nylon or silk thread. Exhibit will be judged on: workmanship, labeling of parts, information, and neatness.

D343-003 Casting Target (SF170) Make a casting target for exhibit and use. Target must be under 48" x 48". The bullseyes must be 2 feet, outer band must be 1 foot in diameter and can have up to 3 rings. The exhibit must be easy to store, durable, and weather resistant. Include the purpose and rules of using your casting target.

D343-004 Wildlife Harvesting Equipment Board Exhibit (SF171) Display of equipment used in harvesting wildlife. Examples: expended ammunition casings (no live ammunition permitted), steel traps, hide stretchers, fleshers, etc. For displays of shotguns, rifles, or bows, use drawings or pictures. Label all items displayed: the purpose of each item, when or where it is used and any personal experiences you have had with the item(s).

D343-005 Inventing Wildlife/Fish Harvesting Equipment, Aid or Accessory (SF168) Use engineering principles to invent or adapt equipment that helps you harvest fish or wildlife. This could include wildlife calls, adapted fishing pole for shallow water, a blind, decoys, etc. Share your drawing (or adapted plans), how the equipment works, how you tested it, and the results of testing your prototype and any adjustments you made.

OTHER NATURAL RESOURCES

D361-001 Design Your Own Exhibit in Natural Resources, Conservation, Geology or Ecology (SF171) This class is for educational exhibits about natural resources, conservation, wildlife, or ecology that do not fit into other categories. Entries must be appropriate for fair display and no larger than 24" x 24". All entries must include a title and should be clear (a brief explanation or other method) about the intended purpose or message – what the exhibit is meant to show. Think about accuracy, creativity, educational value for viewers, and evidence of exhibitor's personal experiences and learning.

| | | | | |
|---------|--------|------|-----|-------|
| PREMIUM | Purple | Blue | Red | White |
|---------|--------|------|-----|-------|

\$4.00 \$3.75 \$3.25 \$2.75

Outdoor Adventures - Level 2

D341-001 Poster Create a poster display no larger than 22" X 28". Topics may include, but not limited to one or more of the following; how to pitch a tent, knot tying, cooking over a campfire, how to start a campfire, wildlife and plants identified while camping, how to set up emergency shelter, dealing with weather, collection of photos from camping trips, "Leave No Trace" and how that was followed while camping, plan a camping trip, camping essentials, environmental issues/protecting natural resources, park or trail clean up, sanitation/hygiene while outdoors or use of GPS.

D341-002 Journal/Binder Written report of actual, virtual or actual camping/hiking trips with observations OR field journal (notes of actual experiences, sights, sounds, smells, etc.), OR camping or hiking trip diary. Explain growth in project, leading the hikes, planning the camping trip, now being able to identify the wildlife and nature around you and how identified (sight/sound/shape/smell/color). Feathers/leaf/flower pressings must be securely attached, if included. Photos of drawing of observations encouraged. Exhibits measure no larger than 16" X 16".

D341-003 Camping/Hiking Safety Must include explanation of use of item and why selected/purpose, how it fits hiking/camping needs. May include, but are not limited to, one of the following: travel sized poisonous plants guide, camping first aid kit, weather/water safety or hand hygiene kit. Exhibits measure no larger than 18" X 24".

D341-004 Digital Media Use digital media to show video/slideshow/presentation of setting up a tent (include why site is chosen) or protecting natural resources or environmental issues or computer video camping/hiking game. Submit a USB drive or DVD inside a report cover or notebook. If using a slideshow, include printed slides inside report cover or notebook.

D341-005 Other Camping Items Must include what inspired the creation of the item, and its purpose. May include, but are not limited to one of the following; nature art, nature haiku poem, spider web sketches or knot display. Exhibits measure no larger than 18" X 24".

Rules

1. Display posters must be made of material, e.g. foam board or poster board and measure no larger than 22" X 28". Poster material should be sturdy enough to hold display items.
2. Display exhibits other than posters to be no larger than 18" X 24".
3. Journal/Binder exhibits measure no larger than 16" X 16".
4. Consider neatness and creativity.

Outdoor Adventures Level 3

D341-006 Poster Create a poster display, no larger than 22" X 28". Topics may include but not limited to one of the following; Topographic map, backpacking trip plan, camp layout, plan an expedition (can be dreamed or lived), collection of photos from your expedition, trails hiked, cost comparison of rental vs purchase or using GPS/compass.

D341-007 Journal/Binder Written report of actual, virtual or imagined expeditions/camping/hiking, OR field journal (notes of actual experiences, sights, sounds, smells, etc.). Explain growth in project, challenges in leading a group, teaching others about wildlife and nature identification and "Leave No Trace." Exhibits measure no larger than 16" X 16".

D341-008 Expedition Safety Must include an explanation of use of items, why selected/purpose of item, how it meets hiking/camping/expedition needs. May include but are not limited to; travel sized edible plants, creepy crawly guide, tent repair kit, travel first aid kit or weather/water safety. Exhibits measure no larger than 18" X 24"

D341-009 Digital Media Use digital media to show video/slideshow/presentation of one of the following, but not limited to; building a non-tent shelter (include why needed), packing your backpack/equipment and getting it onto you, teaching others about environmental issues or a computer video backpacking expedition game. Submit a USB drive or DVD inside a report cover or notebook. If using a slideshow, include printed slides inside report cover or notebook.

D341-010 Other Expedition Items Must include what inspired the creation of the item, and the purpose of the item. May include, but are not limited to; nature art, nature cinquain poem, backpacking food recipes, hiking/expedition conditioning plan, charcoal etching, dehydrated meal or snack (at least 1 cup displayed in a resealable plastic bag with ingredients, instructions, and nutritional facts included). Exhibits measure no larger than 18" X 24"

Rules

1. Display posters must be made of material, e.g. foam board or poster board and measure no larger than 22" X 28". Poster material should be sturdy enough to hold display items.
2. Display exhibits other than posters to be no larger than 18" X 24".
3. Journal/Binder exhibits measure no larger than 16" X 16".
4. Consider neatness and creativity.

| | | | | |
|---------|--------|--------|--------|--------|
| PREMIUM | Purple | Blue | Red | White |
| | \$6.00 | \$5.00 | \$4.50 | \$4.00 |

TAXIDERM

D346-001 Tanned Hides or Taxidermy (SF172) Any legal fish, bird, or other wild animal properly processed by the member. No requirement as to size or mounting. Include the following information: 1) the animal's name and 2) information about the exhibitor's personal field experiences, study, or observations that relate to the exhibit

| PREMIUM | Purple | Blue | Red | White |
|--------------|--------|--------|--------|--------|
| Classes 1-5 | \$4.00 | \$3.00 | \$2.50 | \$2.00 |
| Classes 6-11 | \$5.00 | \$4.00 | \$3.50 | \$3.00 |

Wildlife and How They Live

Rules:

Classes 1-4 are board or poster exhibits. Display may show any aspect of wildlife, wildlife habitat, or related conservation. For more ideas, refer to project booklets. Remember to look at General Rules for this area.

D340-001 Mammal Display (SF154) Examples: life history or other facts about one type of wildlife; how to manage wildlife on a farm or in town; managing habitat for one kind of wildlife; life requirements for one kind of wildlife during one season or through the year; wildlife behavior and habitats.

D340-002 Bird Display (SF154) Examples: life history or other facts about one type of wildlife; how to manage wildlife on a farm or in town; managing habitat for one kind of wildlife; life requirements for one kind of wildlife during one season or through the year; wildlife behavior and habitats.

D340-003 Fish Display (SF155) Examples: life history or other facts about one type of wildlife; how to manage wildlife on a farm or in town; managing habitat for one kind of wildlife; life requirements for one kind of wildlife during one season or through the year; wildlife behavior and habitats.

D340-004 Reptile or Amphibian Display (SF156) Examples: life history or other facts about one type of wildlife; how to manage wildlife on a farm or in town; managing habitat for one kind of wildlife; life requirements for one kind of wildlife during one season or through the year; wildlife behavior and habitats.

D340-005 Wildlife Connections (SF157) Board or poster exhibit. The purpose of this display is to show interconnections and related aspects among animals, plants, and other habitat components. All displays should show two or more interactions (connections) that occur between/among animals or between animals and their habitat.

Displays might show how animals interact with other animals, with people, or with their habitat. Examples: Food chain display. Use pictures, drawings, or other items to illustrate the source of food energy and where it goes - who eats whom or what. Use arrows to show the direction of the energy (food) flow. Show the role of predators, scavengers, insect eaters, or others in nature. Show how wildlife numbers (populations) change through the year. Show predation, competition, or other behavioral interactions of wildlife. - Choose one kind of wildlife and make observations through a season or year, keep notes of interactions, then make a display of what you saw.

D340-006 Wildlife Tracks (SF158) Board or diorama-type box exhibit. Make a display of animal tracks using plaster-of-paris casts. There are 3 options. For all options, include a brief description of your experiences in making the tracks so the judges better understand what you did and learned. Positive casts (impressions as they would be in nature) are preferred. - Option 1 should show plaster-of-paris tracks of five or more kinds of wildlife along with a picture or illustration of each kind of animal. (OR) - Option 2 should show two or more plaster-of-paris tracks of one specific kind of wildlife and should include a picture or illustration of the animal, what the animal may eat, and what may eat the animal. (OR) - Option 3 should show two tracks and include the animal's habitat needs including preferred food, shelter, water, and space in addition to a picture or illustration of the animal.

D340-007 Wildlife Knowledge Check (SF159) Use electrical circuits, pictures, or other methods of teaching wildlife identification or other wildlife conservation or shooting sports related knowledge. Plan size and shape to fit transportation and display; maximum size 24 x 24 inches.

D340-008 Wildlife Diorama (SF160) Exhibit must be no larger than 24" x 24". The exhibit might show a grassland, prairie, agricultural, woodland, riparian (stream or river corridor), wetland, and/or other area with wildlife habitat. Example: show an area interspersed with several habitats such as windbreaks, farm fields, woods, waste areas, ditches, and pastures for edge-adapted species such as white-tailed deer, Northern bobwhite, mourning doves, cottontail rabbits, fox, squirrels, Northern cardinals, or blue jays. Label the habitats displayed and show at least five kinds of wildlife in their proper habitats.

D340-009 Wildlife Essay (SF161) Learn how to share educational information by writing. Choose a conservation or wildlife topic that interests you and write an essay about it. For example, write about a particular species of wildlife that you have observed or about the values of wildlife. You might write about wildlife on a farm, in town, in a backyard, at a backyard feeder, or at other places. You might write about ethics, proper behavior in the outdoors, hunting, or fishing. The essay is between 100 and 1000 words long and typed, double spaced on 8 ½ x 11 paper. You might use books, magazines, or personal interviews as resources, but you must give credit to all sources by listing them.

D340-010 Wildlife Values Scrapbook (SF162) Make a scrapbook about the various values of wildlife. This would include aesthetic, scientific, commercial, game, genetic, and/or ecological. One resource would be the Wildlife Conservation project booklet (4-H 125).

D340-011 Wildlife Arts (SF163) The purpose of this class is to allow artistic exhibits that contain educational information about conservation and wildlife. Examples might include paintings, photographs, and wood carvings, painted duck decoys, or songs or poems written by the exhibitor. Entries must be appropriate for fair display and no

larger than 24" x 24". For example, paintings or photographs should be displayed in notebook format or mounted on a sturdy display panel. All entries must include a title and brief explanation of the purpose or message (what is the exhibit meant to show).

| | | | | |
|---------|--------|--------|--------|--------|
| PREMIUM | Purple | Blue | Red | White |
| | \$5.00 | \$4.00 | \$3.50 | \$3.00 |

WILDLIFE HABITAT

D342-001 Houses (SF165) Make a house for wildlife. Examples: birdhouse (bluebird, purple martin, wood duck, kestrel, barn owl, etc.) or bat house; no insect houses. Make the house functional so that dimensions, hole size etc. are appropriate to fit the intended species' needs. Include the following information: 1) the kinds of animal(s) for which the house is intended, 2) where and how the house should be located for best use, 3) any seasonal maintenance needed and 4) any evidence of your personal observations or experiences. Tips: check OneGuide "Backyard Wildlife Bird Houses and Shelves", G2002

D342-002 Feeders/Waterers (SF166) Make a birdbath or feeder. Examples: seed, suet, or nectar feeders. A squirrel feeder is okay but no insect feeders. Include the following information: 1) the kinds of animal(s) for which the water/feeder is intended, 2) where are how the water/feeder should be located for best use, 3) any seasonal maintenance needed, and 4) any evidence of your personal observations or experiences. Tips: check NebGuide on feeding birds.

D342-003 Wildlife Habitat Design Board or Poster Exhibit (SF167) Choose a backyard, acreage, or farm, and design a habitat plan to meet the food, water, shelter, and space needs of at least three kinds of animals you would like to attract. Draw an outline of the area and show what plants or other habitats will be provided. Indicate how the various parts of your plan provide the desired habitat needs. You might include an aerial photo of the area if you have one

Rules

4-H Shooting Sports requires youth to be under the direct leadership of a certified 4-H Shooting Sports Leader in either shotgun, rifle (bb gun), archery, pistol, black powder/muzzleloader, and/or hunting skills. No firearms can be entered as an exhibit, nor live ammunition; however, information can be shared through pictures. Classes 004-009 can be entered by anyone in the conservation and wildlife area.

| | | | | |
|---------|--------|--------|--------|--------|
| PREMIUM | Purple | Blue | Red | White |
| | \$5.00 | \$4.00 | \$3.50 | \$3.00 |

4-H SHOOTING SPORTS

4-H Shooting Sports requires youth to be under the direct leadership of a certified 4-H Shooting Sports Leader in either shotgun, rifle (bb gun), archery, pistol, black powder/muzzleloader, and/or hunting skills. No firearms can be entered as an exhibit; nor can live ammunition. However, information can be shared through pictures.

D347-001 Shooting Aid or Accessory (SF253) Any item that helps the shooter/ hunter better perform their sport, examples: rifle sling, kneeling roll, arm guard, shotgun vest, target boxes, shooting stick, etc... Include your design, or plans you adapted, what the item is and used for.

D347-002 Storage Case (SF254) An item with the purpose to safely hold a firearm, bow, ammunition, and/or arrows, examples: Soft-sided shotgun case, quivers, firearm safe, include your design, or plans you adapted. Explain how the storage case is used.

D347-003 Practice Game or Activity (SF255) Invent or adapt an activity to practice or teach a project skill. Include pictures of youth playing the game, testimonials of 4-H members who played the game, what skill is being worked on, and directions for the game. Explain how you came up with the game or adapted it to fit the needs of your group members.

D347-004 Science, Engineering, Technology Advancements of Shooting Sports, Conservation, or Wildlife Essay or Display (SF256) Choose a specific area of shooting sports and share how it has advanced. Include a timeline and photos or illustrations. Keep your topic narrow and manageable. Essays are limited to 1000 words and should be on 8 ½ x 11 paper.

D347-005 Healthy Lifestyles Plan (SF257) Include a shooter's (hiker's, camper's, anglers) diet and exercise plan, and how the 4-H member will benefit or improve from following the plan. Ideally, the 4-H member would follow the plan and include some journal entries about adaptations or improvements made while following the plan.

D347-006 Citizenship/Leadership Project (SF258) Share a display on a citizenship project or leadership project the 4-H member took on individually or with a group to improve some aspect related to 4-H Shooting Sports, Conservation, or Wildlife. Examples could be range development, conservation planting to attract wildlife, a camp, 4-H recruitment event. Include who benefitted from the project, what the 4-H member's role was, and any results.

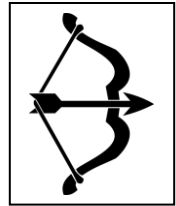
D347-007 Career Development/College Essay, Interview or Display (SF252) Research opportunities for careers related to this area or opportunities for college majors or college activities to help discover using project skills beyond a person's 4-H career. Essays are limited to 1000 words and should be on 8 ½ x 11 paper. Interviews need to include a picture of the interviewee in their work setting, questions asked, and a transcript of answers.

D347-008 Community Vitality Display (SF251) Explore the difference shooting sports, conservation, fishing, and hunting make in keeping Nebraska vibrant especially in rural areas. Present facts and research in an interesting way

for the public.

D347-009 Ag Literacy-Value Added Agriculture Interview or Research Project (SF250) Explore how traditional ag producers are adding value to their production agriculture operations through conservation efforts, hunting, raising pheasants, shooting sports related tourism, etc. Present finding in an interesting way for the public.

County Fair 4-H Shooting Sports Competition



Each 4-H member **MUST** attend a **MINIMUM** of 4 practices in each discipline with a certified instructor to compete in that division at the fair.

- 4-H'ers are required to wear the official County Fair 4-H t-shirt, jeans and shoes that cover the entire foot.
- Hair must be pulled back. Hats or caps are allowed as long as they do not interfere with shooting as per superintendent discretion.
- Check-in will begin 30 minutes before shoot time.
- No coaching by parents. Youth have to address the coach and ask for help.

| PREMIUM | Purple | Blue | Red | White |
|---------|--------|--------|--------|--------|
| | \$5.00 | \$4.00 | \$3.50 | \$3.00 |

Rosettes will be awarded for the Grand and Reserve Champion in all age divisions.

Archery

Recurve and compound bows may be used. Only arrows with a field point (no broadheads). 4-H members must furnish their own arrows. (Minimum of 6 arrows)

Indoor Target Competition

Superintendent: Co-Superintendents: Darren Graves & Scott Stuhr

The competition will consist of 30 arrows shot in 6 rounds of 5 arrows each. Archers have 4 minutes to shoot their 5 arrows in each end. They will be shot at 80cm USA Archery Targets at the following distances:

In target classes, Junior 10 yards and Intermediate/Seniors 20 yards. Ages are as of December 31, 2021.

Junior, age 8-11 years

D500-901-1 Compound Barebow –Genesis included

D500-901-2 Compound Freestyle – Use of release, stabilizer, sights or clickers (or any other devices)

D500-901-3 Recurve Barebow

D500-901-4 Recurve Freestyle

Intermediate, 12-14 years

D500-902-1 Compound Barebow –Genesis included

D500-902-2 Compound Freestyle – Use of release, stabilizer, sights or clickers (or any other devices)

D500-902-3 Recurve Barebow

D500-902-4 Recurve Freestyle

Senior, 15-18 years

D500-903-1 Compound Barebow –Genesis included

D500-903-2 Compound Freestyle – Use of release, stabilizer, sights or clickers (or any other devices)

D500-903-3 Recurve Barebow

D500-903-4 Recurve Freestyle

3-D/Field Archery Competition

Superintendent: Co-Superintendents: Jen Jennings & Scott Stuhr

- 3-D competition will consist of 30 arrows. Juniors will shoot from 5-30 yards, Intermediates will shoot from 5-40 yards, and Seniors will shoot from 5-50 yards. Targets may include 3D and other varying target faces.
- Time limit for finding lost arrows will be two minutes.

Junior 8-11 years

D500-916-1 Barebow no device used (includes Genesis bows)

D500-916-2 Freestyle devices used such as sights, stabilizers, or mechanical releases.

D500-916-3 Freestyle Limited devices used including sights and stabilizers. No releases.

D500-916-4 Olympic Recurve any recurve bow with sights, stabilizers, clickers, etc.

Intermediate 12-14 years

D500-917-1 Barebow no device used (includes Genesis bows)

D500-917-2 Freestyle devices used such as sights, stabilizers, or mechanical releases.
D500-917-3 Freestyle Limited devices used including sights and stabilizers. No releases.
D500-917-4 Olympic Recurve any recurve bow with sights, stabilizers, clickers, etc.

Senior 15-18 years

D500-918-1 Barebow no device used (includes Genesis bows)
D500-918-2 Freestyle devices used such as sights, stabilizers, or mechanical releases.
D500-918-3 Freestyle Limited devices used including sights and stabilizers. No releases.
D500-918-4 Olympic Recurve any recurve bow with sights, stabilizers, clickers, etc.

BB Gun Superintendent: Heath Jennings Asst. Supt. Carrie Siebke
Minimum age is 8 years as of 12-31-2021. National Rifle Association 5 meter BB Gun Targets will be at 5 meters from the firing line. 10 rounds with 2 practice shots (sighting shots bulls on target). Competition will be done at three positions: Prone, Standing, Sitting. 4-H members must furnish their own guns and BB's. Open sights and peep sights allowed, with no optical enhancing. NO scopes. Safety glasses must be worn by EVERYONE on the firing line. No more than three (3) pumps on pneumatics.

D500-904 BB Gun Junior 8-10 years
D500-905 BB Gun Intermediate 11-13 years
D500-906 BB Gun Senior 14-18 years

Air Rifle Contest Supt. Dana Glass

Minimum age is 8 years as of 12-31-2021. Targets will be at 10 meters from the firing line. 10 rounds with 2 practice shots (sighting shots bulls on target), and two banks of silhouettes. Competition will be done at three positions: Prone, Standing, Kneeling. 4-H members must furnish their own guns and pellets. Safety glasses must be worn by EVERYONE on the firing line. Updated rules and procedures will be sent to registered participants a week prior.

D519-001 Air Rifle Junior 8-10 years
D519-002 Air Rifle Intermediate 11-13 years
D519-003 Air Rifle Senior 14-18 years

.22 Rifle Contest

Superintendent: Carrie Siebke Asst. Supt. Tanya McKay
Member must be 10 years old and have completed one year of another 4-H shooting sports project, and competition or 4 practices under a certified 4-H SS leader.

Targets are CMP b-19, Rimfire Sporter Targets will be 10 yards from the firing line, targets which will be provided. Competition will be done at three positions: Prone, Standing, Sitting. Ten rounds per target at 25 yards. 4-H members must furnish their own guns Variable powered scopes set to no more than 6 power (can be spot checked on the line) Eye and ear protection must be worn by EVERYONE on the firing line.

D500- 016 Junior 10 years
D500-907 Intermediate 11-13 years
D500-908 Senior 14-18 years

Pistol Smallbore Contest

Superintendent: Tanya McKay Asst. Supt. Carrie Siebke
Member must be 10 years old and have completed one year of another 4-H shooting sports project, and competition or 4 practices under a certified 4-H SS leader.

Targets are CMP b-19, Rimfire Sporter Targets will be 5 yards from the firing line, targets which will be provided. Competition will be done at three positions: Prone, Standing, Sitting. Ten rounds per target at 25 yards. 4-H members must furnish their own guns Variable powered scopes set to no more than 6 power (can be spot checked on the line). Safety glasses must be worn by EVERYONE on the firing line.

D500-011 Junior 10 years
D500-909 Intermediate 11-13 years
D500-910 Senior 14-18 years

Hunting Skills Contest

Superintendent: Christi Aycok

Member must have participated in at least four practices/classes. The competition will include two parts: wildlife knowledge (examples: identification, tracks, bones, furs, feathers, habitat), and at least one skill learned in class (examples: fire-starting, GPS location, compass navigation, shoot/no-shoot scenario, binocular use)

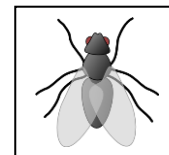
D500-913 Junior, Ages 8-10

D500-914 Intermediate, Ages 11-13

D500-915 Senior, Ages 14-18

ENTOMOLOGY

Entomology exhibits give 4-H'ers the opportunity to demonstrate their knowledge about insects and insect displays. This category has multiple projects that allow 4-H'ers to progress over numerous years.



Rules: Specimens in display collections should be mounted properly and labeled with location, date of collection, name of collector, and order name. Follow mounting and labeling instructions in the Nebraska 4-H Entomology Manual. Boxes are preferred to be 12" high X 18" wide, and landscape orientation, so they fit in display racks. Purchase of commercially made boxes is allowed. All specimens must be from the collector.

| | | | | |
|---------|--------|--------|--------|--------|
| PREMIUM | Purple | Blue | Red | White |
| | \$6.00 | \$5.00 | \$4.50 | \$4.00 |

ENTOMOLOGY

H800-001 Entomology Display, First-Year Project (SF186) Collection to consist of 25 or more different kinds (species) of insects representing at least 6 orders. Limit of one box.

H800-002 Entomology Display, Second-Year Project (SF186) Collection to consist of a minimum of 50 kinds (species) of insects representing at least 8 orders. Replace damaged or poorly mounted specimens. At least 25 species should be present from after July 1 of the previous year. Limit 2 boxes.

H800-003 Entomology Display, Third-Year or More Project (SF186) Collection to consist of a minimum of 75 kinds (species) of insects representing at least 10 orders. Replace damaged or poorly mounted specimens. At least 25 species must be present from after July 1 of previous year. Limit of 3 boxes.

H800-004 Special Interest Display or Advanced Insect (SF187) Educational display developed according to personal interests and/or advanced identification capability. This also is an opportunity to highlight favorite insects in a creative arrangement. Insects should conform to pinning and mounting standards as in Classes 1-3 and be protected in an insect box. Each specialty display should include names of the insects, interesting information about them, and why the display was made. Advanced identification collections should have insects grouped with labels that correspond with identification level (e.g. family, genus, and species). A specialty collection may consist of insects by taxonomic group (e.g. butterflies, grasshoppers, dragonflies, scarab beetles) or by host, subject or habitat (e.g. insect pests of corn, aquatic insects, insect mimicry, insect galls, insects from goldenrod, insect pollinators, etc.).

H800-005 Insect Habitats (SF186) Habitats consist of any hand-crafted objects, made of natural or artificial material which are placed outdoors, and which promote or conserve insects in the environment. Insects may include bee pollinators, butterflies, beneficial insects, etc. A one-page report must accompany the exhibit.

H800-006 Macro Photography (SF189) Subjects should be insects, spiders or other arthropods, or any nests, webs or constructions they make. All exhibit prints should be either 8"x10" or 8 1/2 " x 11" and mounted on rigid, black 11" X 14" poster or black matte board. Either orientation is acceptable. No frames allowed. A short caption explaining the subject, printed on white paper, should be glued below the print.

H800-007 Insect Poster/Display Exhibits (SF190) Exhibits can be posters or three-dimensional displays, and artistic creativity is encouraged. Posters should be no larger than 22" x 28". They should be instructional and can be attractive and have pictures, drawings, charts, or graphs. Posters and displays may show any aspect of insect life, habitat, or related conservation or management. Examples include life history and other facts about an insect; insect anatomy; how to manage insects in a farm, home, lawn, or garden setting; experiences rearing one kind of insect; survey of an important insect; insect behavior (ex. nesting, finding food, mobility, defenses, etc.); habitats (e.g. forests, grasslands, wetlands, rivers, or lakes) and what insects are found there, etc. Three-dimensional displays, such as dioramas, sculptures, models or decorative boxes should have a page of explanatory information accompanying them and fit within a 22" x 28" area.

H800-008 Reports or Journals (SF191) Reports and journals should be in a 3-ring binder. A report may be informational, that is, an original article about a favorite insect, a history of insect outbreaks, diseases caused by insects, insects as food, etc. Or, it may be a research report about an investigation or experiment done in a scientific manner. It then should have a basic introduction of the insect studied, methods used, observations, and results of the project. Tables, graphs and images are helpful to include. A journal is an observational study over a period of time with personal impressions. It may cover watching changes of kinds of butterflies over the summer, rearing a specific insect from egg to adult, managing a beehive, observations of insects in a specific habitat, accounts of insect behavior in a forest or flower garden, etc.

Special Entomology Project

Rules

The insect of the year for 2022 is the tiger beetle.

H810-001 Special Entomology Project Educational exhibit based on what was learned from the project. Present information on a poster no larger than 22" x 28" either vertical or horizontal arrangement or in a clear plastic report cover. The 4-H member's name, age, full address, and county must be on the back of the poster or report cover. Reports may include life cycle, distribution of the insect, insect behavior (ex. nesting, finding food, mobility, defenses, etc.); habitats (e.g. forests, grasslands, wetlands, rivers, or lakes). May include a certain species or broad overview of the family or group of insects.

H810-002 Special Entomology Project Display The current years' Special Entomology Project pinned species along with a one to two report of what was learned from researching the insect type. Reports may include life cycle, distribution of the insect, insect behavior (ex. nesting, finding food, mobility, defenses, etc.); habitats (e.g. forests, grasslands, wetlands, rivers, or lakes). May include a certain species or broad overview of the family or group of insects.

FORESTRY

This category provides 4-H'ers an opportunity to prepare displays that show their expertise in many aspects of forestry. Involvement in this category will lead to expansion of seed, twig, wood, leaf, and tree knowledge for 4-H'ers. In addition, participants would learn more about common Nebraskan trees. For more information about tree classification visit this website

https://4hcurriculum.unl.edu/index.php/main/program_project/65

Rules

1. The official reference for all forestry projects is the Tree Identification Manual (4-H 332) which was recently revised and is available for purchase from UNL Marketplace. Other helpful forestry references include Trees of Nebraska (EC 92-1774-X), Leafing Out (4-H431) and Plant a Tree (EC 17-11-80).
 2. Display "boards" must be made from wood or wood composite, e.g. plywood, fiberboard, or masonite, 1/4" to 1/2" thick and no larger than 24" x 24". Display boards may be coated, e.g., painted or varnished, on both sides to prevent warping.
 3. Display "posters" must be made from a material, e.g. foam board or poster board, that will stand upright without buckling, and be no larger than 24" x 24".
 4. Display "books" must measure no more than 16" x 16".
 5. At least 5 of the 10 samples in Class 2, 3, 4, and 5 must be from the list of 60 species described in 4-H 332. Samples must be from 10 different tree species. For example, Emerald Queen Maple and Crimson King Maple are both varieties of the same species (Norway Maple), and thus have the same genus and species name, i.e. *Acer platanoides*. All samples must be from trees, NO shrubs. If more than 10 samples are included in the display, only the first 10 samples from the current year will be judged.
 6. Due to emerald ash borer infestation, no true ash species (Green Ash, White Ash, Black Ash, or Blue Ash) may be included in any collections. Inclusion of a true ash species will result in the project being disqualified.
 7. Remember that other general labeling standards apply. For example, scientific names are always italicized or underlined. Also, the first letter of a Genus name is always capitalized. The first letter of a species name is always lower case. When required, always indicate complete scientific names (Genus and species) and common names, (e.g. Norway Maple) even when "variety names" are included. For example, the scientific name of Emerald Queen Maple is *Acer platanoides* and the common name is Norway maple. "Emerald Queen" may be included as the variety name, but variety names are not required.
 8. How well the exhibitor follows written directions is an important factor in judging.
- Eligibility: All static exhibits must have received a purple ribbon at the county fair to advance to the State Fair.



PREMIUM

| | | | |
|--------|--------|--------|--------|
| Purple | Blue | Red | White |
| \$4.00 | \$3.00 | \$2.50 | \$2.00 |

FORESTRY

D320-001 Design-Your-Own Exhibit (SF 31)

Prepare an educational exhibit about some aspect of trees, forests or forestry that is of special interest to you. Possible topics include paper recycling, wildfires, forest products, and forest wildlife or forest pests. The only requirement is that the display must be no larger than 24 inches by 24 inches. Photographs, drawings, samples, charts, posters, etc. can be used but include enough information to adequately explain the topic. Your display should be substantially different from other display classes. Be as creative as you like.

D320-002 Leaf Display (SF 32)

The leaf display must include samples of "complete leaves" from at least 10 different tree species. The display must include at least two samples of simple leaves, compound leaves, and conifer leaves. Leaves should be pressed, dried, and mounted.

Collection: Whenever possible, collect leaves from mature trees. Collect leaves any time after they have reached full size, usually beginning in early summer. Leaf samples should be in good condition and representative of the average leaves on the tree. Keep in mind that shaded leaves are often much larger than normal. Carefully remove leaves from the twig with the entire petiole or rachis intact. After collection, fresh leaf samples can be temporarily stored within the pages of an old magazine, but they should be properly pressed and dried for display. Be sure to record pertinent information during collection. All Collection must be done by the exhibitor.

Mounting: Leaves may be displayed in a notebook or on a display board. Any method may be used to mount leaves, e.g. wire, blue, tape, staples, plastic bags, but be sure all their features can be clearly identified.

Labeling: The label for each sample must include: 1. Common name, 2. Scientific name, 3. Leaf type, 4. Leaf arrangement (for broadleaf trees), 5. Leaf composition (for broadleaf trees), 6. Collector's name, 7. Collection date, 8. Collection location (be specific, including county and other relevant information)

If a twig is included with a sample, indicate "twig included" on the label. For example, the twig may be included with an eastern cedar sample because the leaves are very small and difficult to remove from the twig. Supplemental information, e.g. general uses, common products, fall color, etc., may be included to enhance educational value.

D320-003 Twig Display (SF 33)

The twig display must include twig samples from at least 10 different tree species. The display must include at least two samples of opposite and alternate leaf arrangements from broadleaf trees.

Collection: Twig samples should be collected during the dormant season (November – April) when the buds are mature. Twig samples must be at least 6 inches long and exhibit buds. Leaves must be removed and side branches must be trimmed to less than 1 inch in length. All collection must be done by the exhibitor.

Mounting: Twigs must be mounted on a display board. Any method, e.g. wire, glue tape, staples, plastic bags, etc., may be used to mount twigs, but be sure all features can be clearly identified. The non-terminal end must be cut at a slant so the pith can be seen.

Labeling: The label for each sample must include: 1. Common name, 2. Scientific name, 3. Leaf arrangement for (broadleaf trees), 4. Collector's name, 5. Collection date, 6. Collection location (be specific, including county and other relevant information)

Supplemental information, e.g. general uses, tree characteristics, etc., may be included with the display to enhance educational value.

D320-004 Seed Display (SF 34)

The seed display must include seed samples from at least 10 different tree species.

Collection: Tree seeds should be collected at the time of year when they mature, which varies widely depending upon tree species. For example, Silver maple seeds mature in May while red oak acorns do not mature until September. Seeds samples should be free of insect or disease symptoms. Remember to display seeds, not fruit. For example, the seed of honeylocust is enclosed in a pod. Remove and display the seed, not just the pod. It is acceptable to display the fruit with the seed, but clearly label each. All collection must be done by the exhibitor.

Mounting: Seeds may be displayed in a variety of ways, e.g. mounted on a display board, displayed in jars in a rack, etc., but they must be securely mounted and easily viewed. Be as creative as you like.

Labeling: The label for each sample must include: 1. Common name, 2. Scientific name, 3. Type of fruit, if known (e.g. samara, pod or legume), 4. Collector's name, 5. Collection date, 6. Collection location (be specific, including county and other relevant information)

Supplemental information e.g. maturity date, average number seed in the fruit, etc., may be included to enhance educational value.

D320-005 Wood Display (SF 36)

The wood display must include wood samples from at least 10 different tree species.

Preparation: Samples may be of any shape, e.g. sections from a board, wood cylinders turned on a lathe, horizontal or vertical cross sections of a small log with bark attached, etc., but all samples should be the same shape, e.g. all wood cylinders or all sections of a board. Each sample can be no larger than 4 inches by 4 inches by 4 inches. Cut surfaces should be sanded to show the grain. Treating samples with a clear finish (no stain) is optional. All collection must be done by the exhibitor.

Mounting: Samples may be displayed in a variety of ways, e.g. mounted on a display board, displayed in a box or rack, etc., but they must be securely mounted and easily viewed. Be as creative as you like.

Labeling: The label for each sample must include: 1. Common name, 2. Scientific name, 3. Wood type (softwood or hardwood), 4. Collector's name, 5. Collection date, 6. Collection location (be specific, including county and other relevant information). Supplemental information e.g. common products, wood density, etc., may be included to enhance educational value.

D320-006 Cross Section Display (SF 38)

Display a disc cut from a tree species listed in 4-H 332. The sample must be collected by the exhibitor and within one year of the state fair judging day. The disc must measure 6 to 12 inches in diameter and 1 to 3 inches thick. The bark should be firmly attached, which may be difficult if the tree was dead when the disc was cut. Sand at least one side of the disc so the grain can be easily seen. If the disc is treated with a clear finish, both sides must be treated to minimize warping. As the disc dries, some cracking or checking can be expected and is allowed.

Labeling: The following parts must be clearly and accurately labeled on the cross section with pins, paper tags, or some other form of identification. 1. Pith, 2. Heartwood, 3. Sapwood, 4. One growth ring (beginning and end), 5. Cambium, 6. Bark. A separate label attached to the back of the disc must include: 7. Common name, 8. Scientific name, 9. Tree classification (softwood or hardwood), 10. Age (of the cross section), 11. Collector's name, 12. Collection location (be specific, including county and other relevant information), 13. Collection date

D320-007 Parts of a Tree – (This project is only for ages 8-11). **(SF 39)**

Prepare a poster no larger than 24 inches' x 24 inches that clearly identifies the main external parts of any tree:

Trunk, Crown, Roots, Leaves, Flowers, Fruit Buds, Bark

Identifying other internal parts, e.g. phloem, xylem, cambium, annual ring, pith, etc., is optional. Attach a separate label on the back of the poster that includes the exhibitor's name and age.

D320-008 Living Tree (SF 40)

Display a living tree seedling grown by the exhibitor from seed in the display container. The seed must be from a species listed in" 4-H 332. The seedling must be 60 days to 1-year-old (on State Fair judging day). The display container must contain at least 8 inches of soil (potting mix or suitable natural soil) have drainage hole(s), and a drain pan to catch drainage water.

Labeling: A waterproof label must be attached and include:1) common name, 2) scientific name, 3) seed treatments (if any), 4) planting date, 5) emergence date, 6) exhibitor's name

Supplemental information about the tree: e.g. where the seed was collected, growth measurements, uses for that species, etc., may be included in an attached notebook, poster, etc. to enhance educational value. Supporting information will be an important factor in judging.

D320-009 Forest Product Display Prepare a visual display and/r collection tracing the origin of one non-lumber product that comes from trees and/or forests. The display must be no larger than 24 inches by 22 inches by 28 inches. Photographs, drawings, samples, charts, posters, etc. can be used. Posters submitted may be no larger than 22" x 28" and may be either vertical or horizontal. The contestant must identify what species of tree the product is derived from and where the product is harvested, grown, or otherwise collected. The product listed must be partially or fully derived from trees; if partial the approximate percentage should be articulated in the display. The goal of this exhibit is for students to learn that many products come from trees and forests and to explore one of these products through in-depth study. Information about the tree or forest product: e.g. information about harvesting, processing, industry information, and environmental or other benefits may be included to enhance educational value.

Supplemental information will be an important factor in judging but should not exceed three printed pages of text. Cite sources of information. Personal interviews with industry professionals are encouraged as a source of information.

D320-010 Forest Health Display Prepare a visual display outlining a specific forest health issue such as a tree disease, insect pest, animal- or human-caused damage, or an abiotic issue such as weather damage. The display must be no larger than 24 inches by 24 inches by 24 inches. Original photographs, drawings, samples, charts, posters, etc. can be used. Actual specimens are strongly encouraged but must be properly preserved, i.e. insects pinned or placed in vials of alcohol, leaves pressed and dried. Posters submitted may be no larger than 24 inches x 24 inches. Explain through the display what species of trees the health issue affects, diagnostic features of the issue (symptoms in trees, identifying features of the pest, etc.), and management options. Include common and scientific names of trees and pests. Supplemental information about the tree or forest health issue: e.g. origin, proliferation in Nebraska/United States, and physiological effects on the tree may be included to enhance educational value.

Supplemental information will be an important factor in judging but should not exceed three printed pages of text. Cite sources of information. Attach a separate label on the back of the display that includes the exhibitor's name and age.

D320-011 Wildfire Prevention Poster Prepare a poster, no larger than 24 inches x 24 inches that promotes wildfire prevention strategies. Strategies articulated in the poster can include personal and/or land management actions.

Attach a separate label on the back of the poster that includes the exhibitor's name and age. Supplemental information about wildfire prevention should be attached to the poster: e.g. frequency of wildfires in Nebraska/United States, financial costs of wildfires, environmental factors that contribute to wildfires, etc. to enhance educational value. Supplemental information will be an important factor in judging but should not exceed three printed pages of text. Cite sources of information

D320-012 Sustainable Landscape Diorama Box must be no larger than 24" x 24". The exhibit must show a Nebraska landscape that includes elements such as windbreaks, fields, pastureland, CRP, public lands, community/municipal landscapes. The goal of this exhibit is for students to articulate conservation and sustainability best-practices that can be implemented on a landscape, while addressing landowner and other stakeholder interests. Label point/nonpoint sources of pollution, carbon sequestration, water-wise practices, wildfire prevention strategies, renewable energy sources, and other conservation practices as well as at least 10 species of plants included in the diorama. Attach to the exhibit a brief report including supplemental information describing the diorama, defining conservation practices, and outlining opportunities for landscape improvements to enhance educational value. Supplemental information will be an important factor in judging but should not exceed three printed pages of text. Cite sources of information.

D320-013 Tree Planting Project Display Plant a tree in your community. Prepare a visual display where the student articulates proper tree planting techniques, why the individual tree species was chosen, as well as steps taken to continue care for the tree after initial planting. The display must be no larger than 24 inches by 24 inches by 24

inches. Photographs, drawings, samples, charts, posters, etc. can be used. Posters submitted may be no larger than 24 inches x 24 inches. The tree must have been planted 60 days to 1 year before State Fair judging day. Students must obtain permission from necessary authorities and property owners before planting any trees. Labeling: the following information about the tree must be included in the display: 1. common name 2. scientific name 3. planting location 4. planting date 5. tree source 6. planter's name 7. proper tree planting steps 8. tree care (after planting) Supplemental information about the tree: e.g. why the species was chosen, growth measurements, uses for that species, etc., may be included in an attached notebook, poster, etc. to enhance educational value. Supplemental information will be an important factor in judging but should not exceed three printed pages of text. Cite sources of information.