



October 2019 Narrative Report

Brandy VanDeWalle

Extension Educator, Fillmore & Clay Counties

Upcoming Events:

November 1st – Staff Mtg.

November 3rd – Clay County 4-H Achievement Night

November 4th – Chat with Chuck

November 5th – STEM Careers Issue Team Planning, Grand Island

November 8th – Job Shadowing Student

November 11th – eXtension Creating Thriving Farms webinar

November 12th – Wellness in Tough Times Team meeting, Kearney

November 12-14th – NCEA/Fall Conference, Kearney

November 18th – eXtension Creating Thriving Farms webinar

November 18th – Clay County Extension Board Mtg.

November 19th – Clay County Supervisor Update and staff meeting

November 20th – York Leadership Class Presentation

November 22nd – Youth Mental Health First Aid Training, Hastings

November 25th – Fillmore County Extension Board Meeting

Innovative Cropping Systems

Fundraising and program planning for **Farmers & Ranchers College** programming continues. The winter programming will kick-off at the Bruning Opera House on December 9th with Dr. Kohl on "Agriculture Today: It is What it is... What Should We Do About It". The Annual Cow/Calf College is set for January 28th at the U.S. Meat Animal Research Center near Clay Center. Programming will wrap up March 10, 2020 in Geneva with Dr. Ron Hanson with "Strategies for Family Farming Success in the Shark Tank."

Mental Health/Rural Stress

The **Wellness in Tough Times** team has been planning various programs on mental health and wellness and working to identify communities to pilot our program. In addition, I wrote the teams' eXtension grant progress report which included data from the Husker Harvest Days survey.

Susan Harris-Broomfield and I are continue to work on finding the right people for testimonial videos on those who might have struggled in the agricultural industry and were able to overcome obstacles he/she faced. We met and will start the video and educational materials for the **pesticide education safety program in-service** which will be on December 4th.

4-H Youth Development

I assisted Rachel with the **National 4-H Week** pumpkin decorating contest and other activities. We also held a 4-H Week coloring contest in which the 4-H'ers coloring sheets were displayed on the extension office window.

I participated in the annual **Progressive Agriculture Safety Day coordinator training** which is required to conduct a Progressive Agriculture Safety Day. It is a great time to review the policies and

N EXTENSION



procedures for the program, but most importantly a great time to connect with other coordinators to obtain new ideas and resources for our program.

I summarized the **Ag Venture Day** data and have provided a summary of the programs impacts on the infographic to the right.

I helped Rachel with the **4-H Amazing Race and Fall Party** by facilitating one of the race stations. There were six teams who participated in the fun-filled event and upon conclusion of the race, achievement and diamond clover awards were handed out.

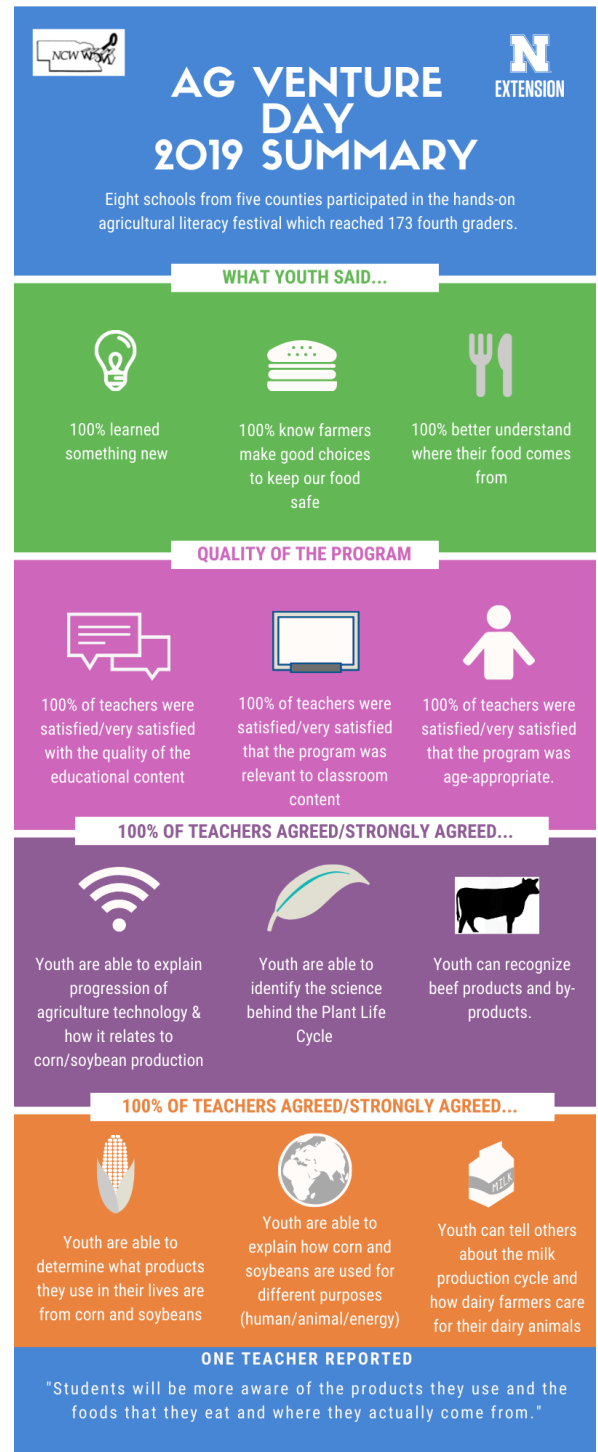
Professional Development or Organizational Citizenship

As a member of the **Southeast District Extension District Promotion committee**, I reviewed five faculty promotion files and provided recommendations. I also mentored a new employee on Unit Leader tasks.

I participated in two rounds of the **Engagement Zone Coordinator interviews**, asking questions of the candidates. Finally, as Past-President of the Ag Section, I participated in an Ag Section update and participated on the nominating committee for candidates.

News Columns/Blogs

October: 4-H Week, Farm Bill Meetings, Tips for a Healthier Halloween, Grazing Stalks, Farmers & Ranchers College Dates Set



Nebraska Extension is a Division of the Institute of Agriculture and Natural Resources at the University of Nebraska—Lincoln cooperating with the Counties and the United States Department of Agriculture.

Nebraska Extension educational programs abide with the nondiscrimination policies of the University of Nebraska—Lincoln and the United States Department of Agriculture. © 2017



For more information: 402-759-3712 | brandy.vandewalle@unl.edu