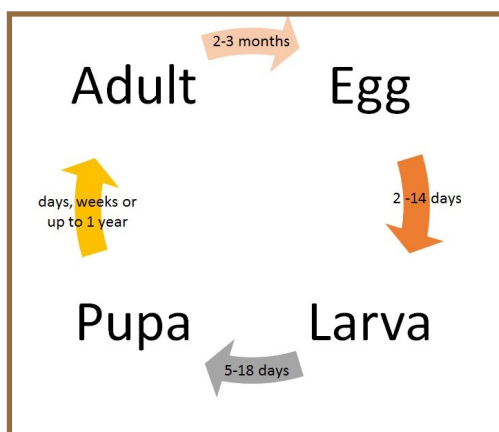


# Fleas

Dr. Jody Green, Nebraska Extension Entomologist

## Fast Facts

- Fleas can jump up to 150 times their height. They do not have wings to fly.
- Fleas can thrive indoors year round.
- The cat flea is the species most commonly bites cats, dogs and humans.
- Bug bombs are advertised to be used against fleas, but are not effective. Save your money!
- An overnight flea trap can be made using a shallow dish, desk lamp or night light and a solution made by mixing 1 part soap to 3 parts water.

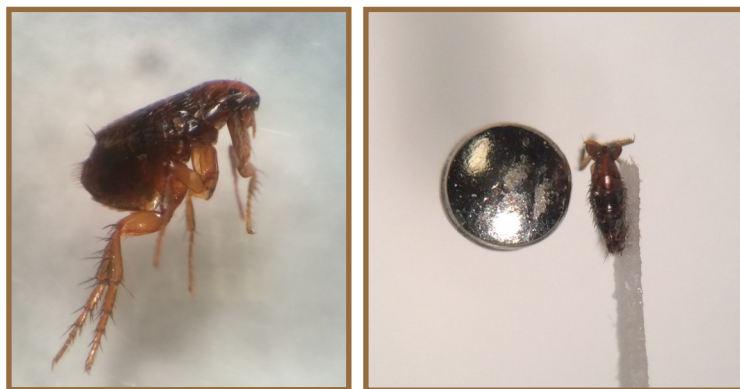


## Life Cycle

Fleas develop through complete metamorphosis undergo complete metamorphosis - egg, larvae, pupa and adult, and their harborage and food source differ during different life stages. Adult females lay up to 50 eggs per day on the host (usually a cat or dog). The eggs fall off to develop in the pet's bed or resting area. They feed on dried blood (called flea dirt) excreted from the adult fleas that feed directly off the host. Mature larvae pupate in silken cocoons and remain in the dormant state until they sense heat, vibrations and carbon dioxide to stimulate adult emergence. Adult fleas live and feed on the blood of their host. Under optimal conditions, fleas can complete the life cycle in a month, but in the absence of a host, can remain in the

## Source

A family pet can provide all things necessary for survival – food, water, and shelter. Households without pets can become infested from wildlife living unknowingly within or near the structure, or by bringing them in on clothing or furniture. In milder temperatures, yards can harbor plenty of fleas particular in long grass, vegetation and wildlife. When fleas are found indoors on humans, bites typically occur on the legs and ankles, sometimes on the thighs and buttocks when sit-



Adult cat flea is 1/16"-1/8" long and has legs modified to jump on to the host. Fleas are hardened, flattened, and have spines to help navigate through hair without being dislodged.

## Management

Flea management requires an integrated approach. If there is a pet in the home, talk to your veterinarian about effective flea treatments and groom pets on a regular basis. If your pet is infested, you will see flea dirt on their skin, especially if it is a light colored dog or cat. Launder and dry pet bedding and vacuum all pet resting areas like the furniture and carpeting to reduce the number of eggs, larvae and pupae in the environment. Make sure to practice proper vacuum management – seal contents and discard outside. Consider contacting a pest management professional for insecticidal treatments to the house. Pupae are resistant to insecticides, so it can take 2-4 weeks to get rid of all fleas. Continue the non-chemical methods daily.