

A Bug's Life


Wolf spiders

Family: Lycosidae - 200+ species in US and Canada

Fun facts

- Do not build web to catch prey
- 'Sit and wait' hunters
- Nocturnal or active at dawn and dusk
- Usually found on bare ground
- Female carries egg sac on spinnerets at the end of the abdomen
- Female carries spiderlings on back for a few weeks after hatching
- Some wolf spiders build burrows

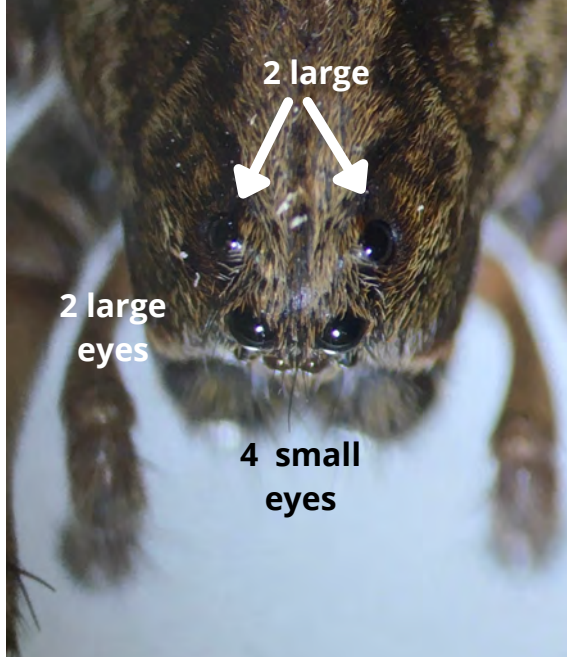
Identification

Eye arrangement (8): 4 small eyes under 4 large eyes arranged like a trapezoid 

Spider: Can be medium to very large (1- 1/4" body length) in size, various colors (brown to gray to nearly black), densely hairy, large jaws, various patterns such as stripe between eyes or two dark bands

Management

- Occasionally get inside under exterior doors, so install tight door sweeps
- Turn lights off at night so not to attract prey organisms to the building
- Manage vegetation and remove debris around to limit hiding spots
- Not harmful or aggressive to humans, but avoid handling
- May frighten people due to large size



Photos: J. Green