

A Bug's Life Western conifer seed bug

Leptoglossus occidentalis

Fun facts

- Feed on sap from parts of coniferous trees in spring and summer
- Overwinter in protective place as adults in leaf litter or inside buildings
- Gather in large numbers on western and southern facing exposures and crawl upwards until they find gap
- Does not reproduce indoors

Identification

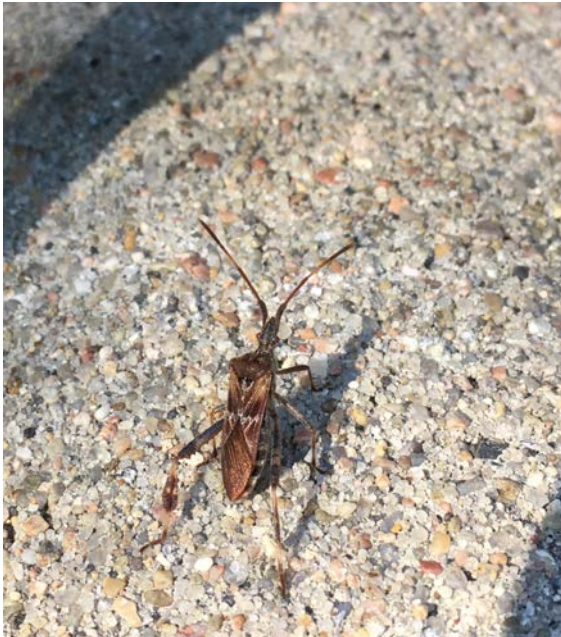
Nymph: Bright red, wingless

Adult: 3/4" long, reddish-brown color, faint zigzag stripe across wings, flattened tibia of hind legs, piercing-sucking mouthparts, long antennae

Other features: Strong defensive odor as defense mechanism when disturbed or crushed

Management

- Harmless to people and pets
- Physical exclusion - caulking and sealing holes, screening, door seals
- Trap with glue boards, sweep or vacuum when they become active again in the spring or warm days
- Perimeter spray of insecticide to exterior of home in the fall before they begin to enter buildings



Photos: J. Green