

A Bug's Life Red and confused flour beetle

Family: Tenebrionidae;

Red flour beetle - *Tribolium castaneum*; Confused flour beetle- *Tribolium confusum*

Fun facts

- Larvae and adult beetles are pests of stored grain products
- Red flour beetle may be found in fields, are attracted to light, and able to fly
- Confused flour beetle are common in flour mills, walk in circles, cannot fly

Products

- Broken grains, flours, meals, dried fruits, shelled nuts, spices, milk chocolate, peas, beans, pet food, dog treats

Identification

Damage: Shed exoskeletons and filth in food product, food turns gray, disagreeable odor and taste, , mold growth

Larvae: 1/4" long, yellowish-brown, 2 prongs at end of cylindrical hard bodies

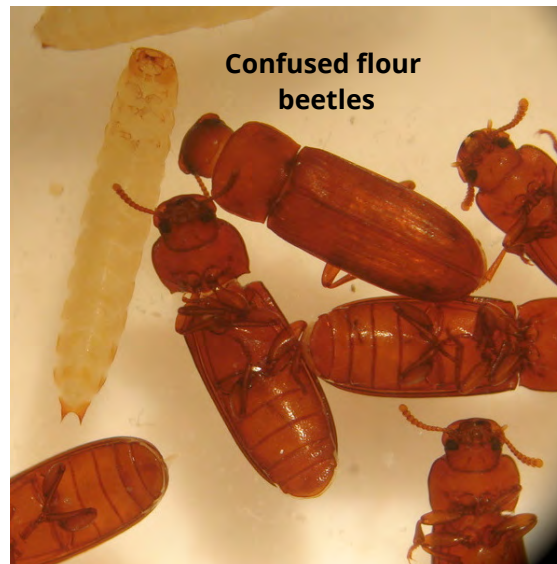
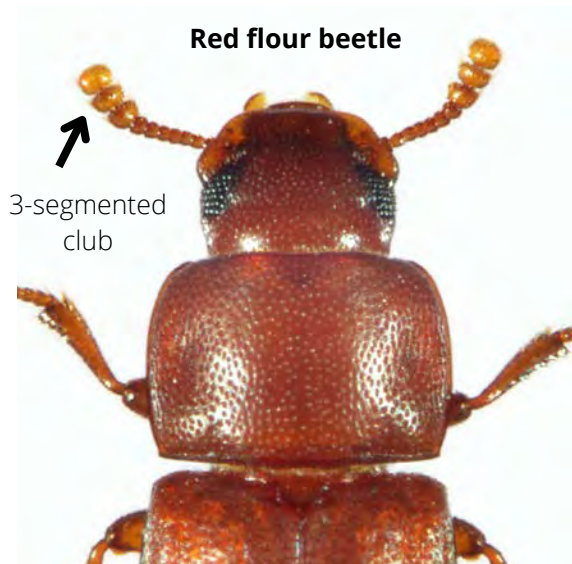
Adults: 1/8" long, reddish-brown, heads visible from top, ridges on wing covers

Red flour beetle: Antennae ends with an abrupt 3-segmented club

Confused flour beetle: Antennae with gradual club

Management

- Inspect packages before purchase, look for rips in bags and insects
- Sweep up any spills right away
- Locate source of infestation, discard contaminated items in outdoor trash
- Check decorative arrangements with corn or seeds and items stuffed with dry beans (i.e. bean bags, heating pads)
- Store whole grain products (wild bird seed, squirrel corn) in airtight containers



Photos: J. Green