

# A Bug's Life Orbweaver spiders

Family: Araneidae - 161 species in North America

## Fun facts

- Spin flat, orb webs to catch prey
- Found outdoors near buildings or gardens with wind drafts or porch lights that stay on at night
- Sit in center of orb web and wait for flying prey to get caught in sticky silk
- Wrap prey in silk before biting and paralyzing

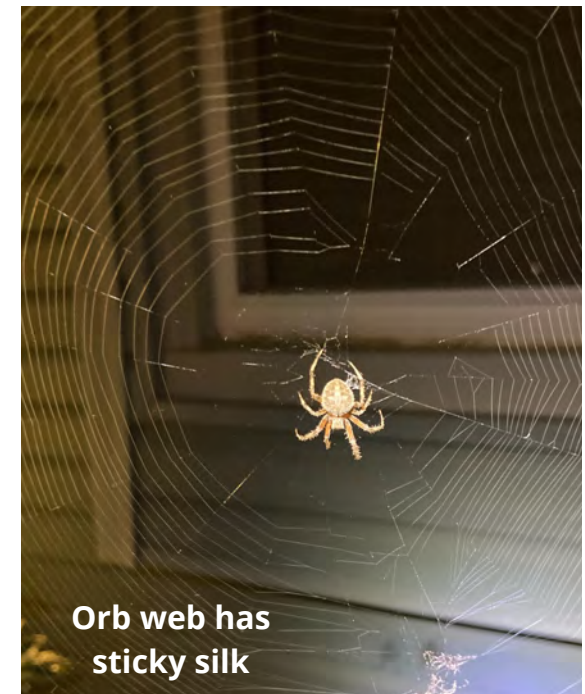
## Identification

Eye arrangement (8): 8 eyes of equal size in 2 close rows, but spaced out across

Spider: Small to large and colorful, roundish bodies, short hairs, thick legs, dark patches with light spots on underside of abdomen, males often much smaller than females

## Management

- Turn lights off at night so not to attract prey organisms to the building
- Natural enemy of many insects
- Remove webs daily with brush or broom to discourage web-building
- Not harmful or aggressive and can live in harmony with humans
- Can easily be relocated



Photos: J. Green