

A Bug's Life

Fun facts

- All species can be found in the garden in large numbers, more of a nuisance than a threat to plants

Host plants

- Large and small milkweed bugs feed on milkweed seeds and false milkweed bug feeds on seeds of false sunflower



Large milkweed bug

Identification

All are black and orange color
Large: 3/4" long, black diamond behind head and black band across wings

Small: 1/2" long, black heart shape and white spots on wings

False: 1/2" long, black double-heart and red "Y" on head



Small milkweed bug

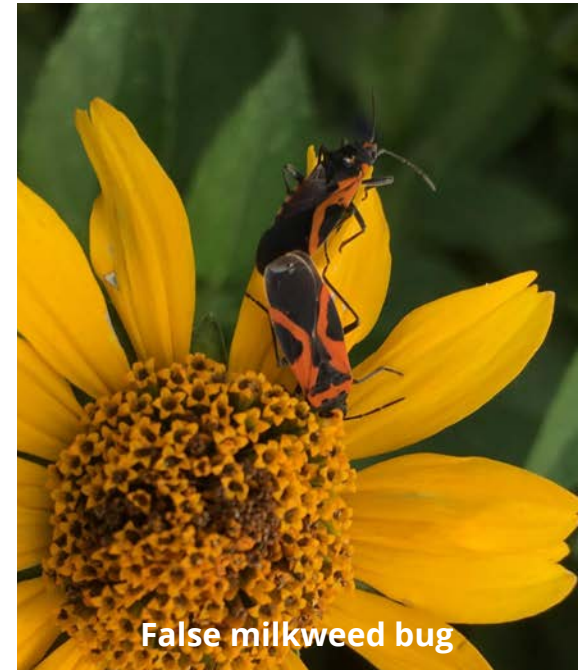
Milkweed bugs

Large milkweed bug - *Oncopeltus fasciatus*; Small milkweed bug - *Lygaeus kalmii*

False milkweed bug - *Lygaeus turcicus*

Management

- In most cases, management is not needed to control any of these bugs
- Simplest way to remove is to tap pods with nymphs over soapy water bucket
- Garden sanitation to remove leaf litter and eliminate overwintering sites
- Treating milkweed with insecticides may be harmful to beneficial insects



False milkweed bug

Photos: J. Green