

A Bug's Life


Grass spiders

Family: Agelenidae; Genus: Agelenopsis

Fun facts

- Also called funnel weaver spiders
- Build large, non-sticky sheet webs connected to a funnel-shaped tube in which to retreat
- Webs found in grass, flowering plants, shrubs, corners of buildings, garages, landscaping in summer
- Waits for prey to crawl or land on web before rushing out to grab it

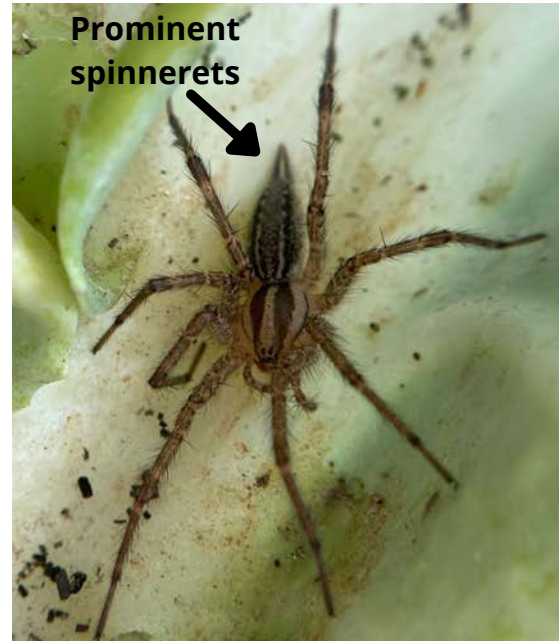
Identification

Eye arrangement (8): 8 small eyes in 2 curved rows of 4 

Spider: Medium size with body length (up to 3/5" long), some have long spinnerets that extend beyond abdomen, light brown body with dark brown stripes and patterns on body and legs, males have enlarged pedipalps by mouthparts

Management

- Sometimes get inside under exterior doors, so install tight door sweeps
- Turn lights off at night so not to attract prey organisms to the building
- Natural enemy of many garden pests
- Remove webs daily with brush or broom to discourage web-building
- Not harmful or aggressive to humans
- May frighten people due to its speed



Photos: J. Green