

A Bug's Life Foreign grain beetle

Ahasverus advena

Fun facts

- Called "new house beetle" because often found in new construction late summer/fall after house is sealed
- Feed on molds and fungi growing in damp areas
- Numbers build up in wall voids and small beetles enter living space, usually upper levels and bathrooms

Identification

Habit: Often found clustering in large numbers near ceiling on upper floors, readily fly

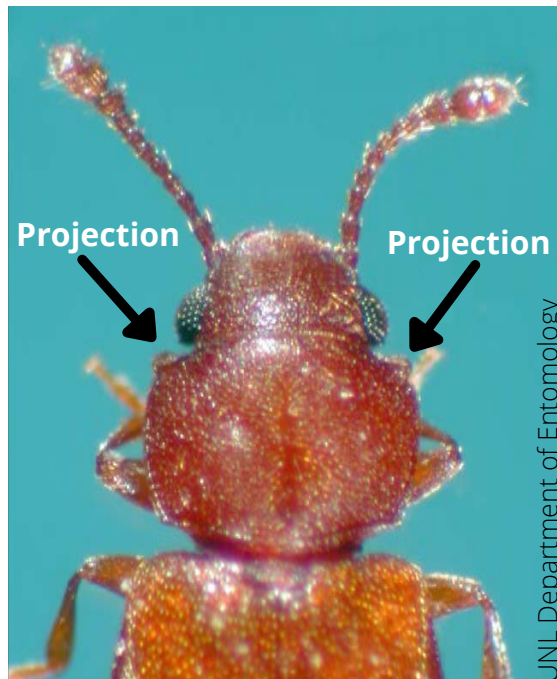
Beetle: 1/12" long, reddish-brown, clubbed antenna, shiny wing covers, and pair of peg-like projections behind eyes (this is identifying characteristic)

Management

- Chemical treatment not needed; beetles cause no damage or harm
- Remove beetles with vacuum cleaner or sweep them up
- Temporary problem as the building will dry out and beetles will not survive
- In older homes, increase air circulation and ventilation and use dehumidifier



UNL Department of Entomology



UNL Department of Entomology



J. Green