

# A Bug's Life Drugstore and cigarette beetles

Family: Ptinidae

Drugstore beetle - *Stegobium paniceum*; Cigarette beetle - *Lasioderma serricorne*

## Fun facts

- Larvae are pests of stored food and non-food products; adults do not feed
- Found in warehouses, museums, homes
- Adults attracted to light, are able to fly, and can chew through packaging

## Products

- Pharmaceuticals, vitamins, tobacco products, spices, rice, coffee beans, tea, cocoa, dried fruits, nuts, pet food, fish meal, rodent baits, animal nests, dried flowers, leather, hair, and anything else

## Identification

Damage: Destroy commodities by feeding; contaminate food products with shed exoskeletons and filth

Larvae: 1/10" long, yellowish-white color, C-shaped, hairy, brown head capsules

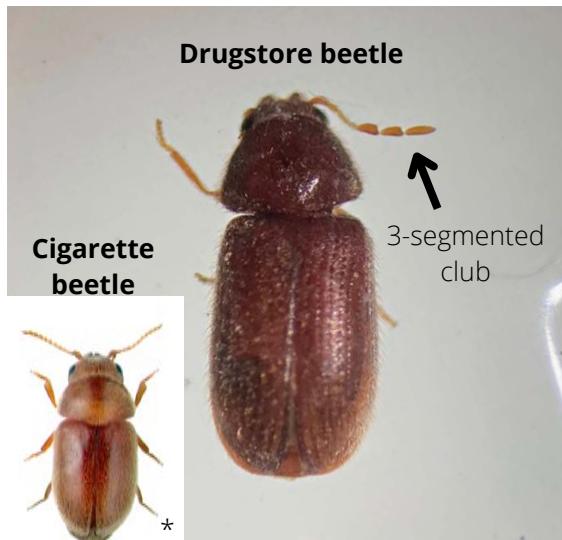
Adults: 1/8" long, reddish-brown color, oval-shaped bodies, fine hairs on wing covers, heads not visible from top

Drugstore beetle: Antennae with 3-segmented club and rows of pits on wing covers

Cigarette beetle: Serrated antennae and smooth wing covers

## Management

- Inspect food packages before purchase, look for rips or holes in bags or boxes
- Check packaging dates for freshness, consume oldest products first
- Locate source of infestation, discard contaminated food in outdoor trash
- Vacuum pantry area and clean up spills
- Store food products/pet food/treats in airtight glass or plastic containers
- Grains can also be stored in the freezer where they will be protected



Photos: J. Green , \*UNL Department of Entomology