

A Bug's Life

Clover mite

Class: Arachnida; Order: Trombidiformes; Family: Tetranychidae
Bryobia praetiosa

Fun facts

- Cool-season, plant-feeding mite
- Active early spring (>45°F) and fall
- Accidentally enter structures through tiny gaps, usually around windows
- Reproduce without mating, but not indoors and do not live long inside
- Overwinter as eggs in sheltered area
- Do not bite people

Identification

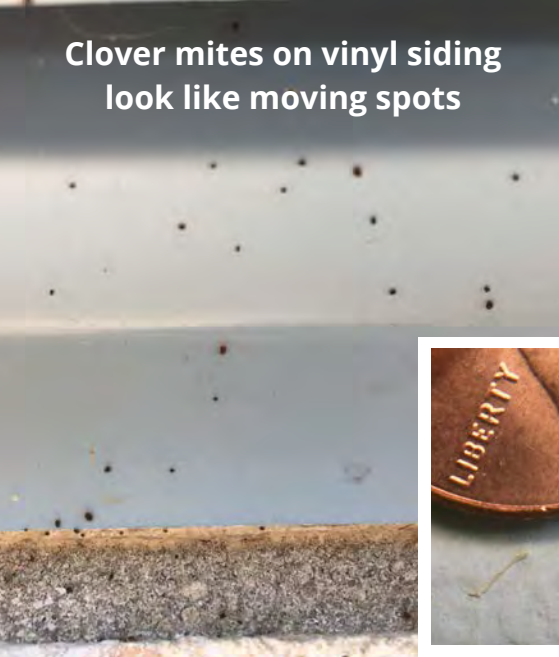
Damage: Light feeding tracks on leaf
Mite: 1/32" in size, reddish or greenish color, oval shaped, extra long front legs, flattened body, no silk

Host plants

- Grasses, clover, other weeds, honeysuckle, ivy, elm, apple, and gooseberry

Management

- No insecticide recommended indoors
- Use vacuum to remove mites indoors
- Use sticky traps along windowsills
- Reduce lush vegetation by leaving 18-24" grass-free band around structure
- Various pyrethroid insecticides are labeled for clover mites for exterior applications; repeat as necessary
- Always read and follow the label



Clover mites on vinyl siding look like moving spots



Clover mites on sticky trap along windowsill

Photos: J. Green