

# A Bug's Life

# Cat flea

*Ctenocephalides felis*

## Fun facts

- Feed on warm-blooded animals
- Most common flea on dogs
- Adults get bitten below knee, children get bitten all over torso
- Families without pets can get fleas from wildlife and feral animals
- Do not fly, but can jump 150 times their height or 8" vertically

## Identification

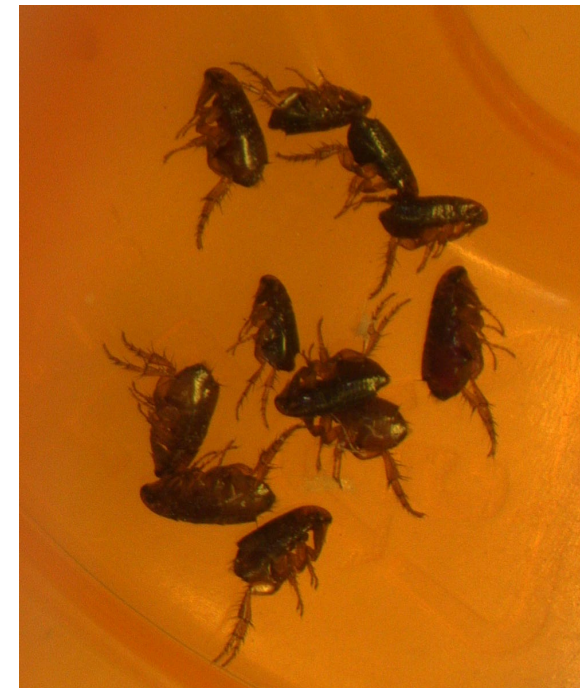
Signs: Flea dirt (feces) in pet's fur

Larva: Legless and worm-like living in pet resting areas away from light

Adult: Reddish-brown, wingless, less than 1/8" long, flattened from the side, backward projecting spines, hardened body, found on the pet or animal it is feeding on

## Management

- Treat all pets according to veterinarian, even indoor pets
- Wash and vacuum pet resting areas
- Indoor insecticide application by professional company
- Exterior treatment may be needed
- Wildlife removal of outdoor animals nesting under porch or crawlspace



Photos: J. Green