

# A Bug's Life

# Boxelder bug

*Boisea trivittata*

## Fun facts

- Feed on developing seeds and leaves of boxelder and maple trees
- Overwinter in protective place as adults in leaf litter or inside buildings
- Gather in large numbers on west and south facing exposures and crawl upwards until they find gap
- Does not reproduce indoors

## Identification

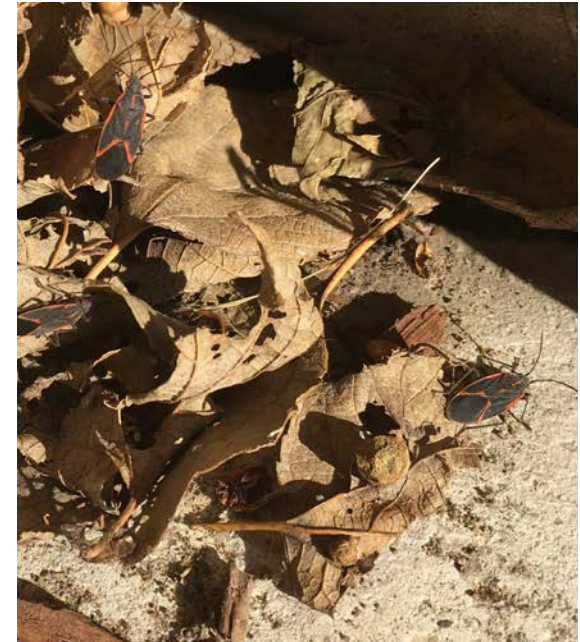
Nymph: Bright red

Adult: 1/2" long, oval-shaped, dull black with reddish-orange stripes behind heads and along wing bases, piercing-sucking mouthparts, long antennae

Other features: Strong defensive odor as defense mechanism when disturbed or crushed

## Management

- Harmless to people and pets
- Physical exclusion - caulking and sealing holes, screening, door seals
- Trap with glue boards, sweep or vacuum when they become active again in the spring or warm days
- Perimeter spray of insecticide to exterior of home in the fall before they begin to enter buildings



Photos: J. Green