

# A Bug's Life

# Bat bug

*Cimex Adjunctus*

## Fun facts

- Primary host are bats, normally roosting in and around the structure
- May feed on humans in the absence of bats, but good indicator that bats are or were present
- Usually found in rooms on upper level floors, close to windows, below vents, light fixtures, near attic entry
- Often found wandering around during the day and not always near sleeping areas

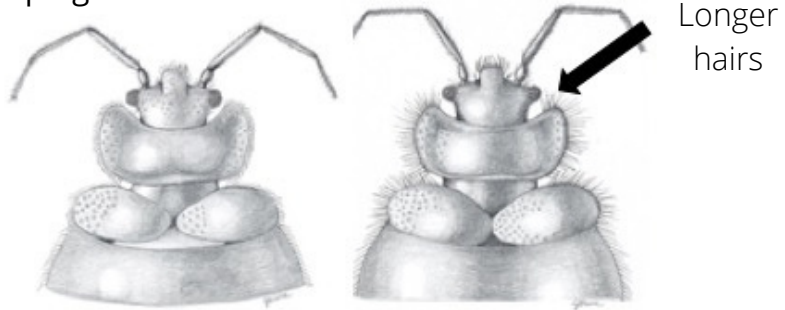
## Identification

Signs: Live bugs, dead bugs, shed exoskeletons, associated with bats

Bed bug: Wingless, reddish-brown, flat oval-shaped, 1/4" long as adult and smaller if immature, long segmented antennae, beaklike mouthpart on underside of body, when compared to bed bug under magnification, bat bug has longer hairs behind head

## Management

- Inspect areas for bats
- Exclude bats by installing one way door, so bats can leave but not get back inside (except in June or July)
- Contact professional services for wildlife management
- May need insecticidal treatment if high population of bat bugs left
- which may include treatment for
- Vacuum carpets and furniture



Bed bug



Bat bug



Photos: J. Green