

A Bug's Life

Aphids

Family: Aphididae

Fun facts

- Rapid reproduction without mating
- Congregate on underside of leaves
- Overwinter as eggs
- Several generations per year

Host plants

- Multiple plants, including tomato, peppers, potato, cabbage, broccoli, beets, cucumber, squash and others

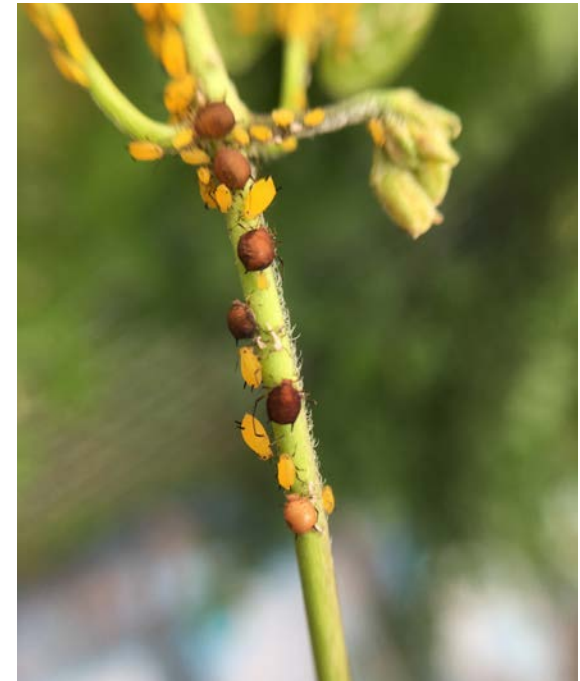
Identification

Damage: Tiny white or yellow spots on leaves, leaf curl, discoloration, sticky honey dew, sooty mold due to honeydew, presence of ants (farm aphids for honeydew)

Aphid: 1/16 to 1/8" long, pear-shaped, sometimes winged, greenish-yellow pair of tubular cornicles near tip of abdomen

Management

- Inspect plants regularly for aphids and honeydew
- High pressure water spray of hose
- Organic options include insecticidal soap, neem oil and horticultural oil to conserve natural enemies.
- Avoid spraying when temperatures are above 85°F
- There are many natural enemies



Photos: J. Green