

A Bug's Life

Antlions

Order: Neuroptera; Family: Myrmeleontidae

Fun facts

- Mysterious pits observed June to October in loose soil in garden beds
- Larvae are called doodlebugs
- Doodlebugs are voracious predators that lie in wait underground for insect prey (ants) to fall into pit
- Both larvae and adults are seldom seen (larvae in soil, adults nocturnal)

Identification

Damage: Pits are 1 to 2" diameter, 1 to 2" deep, cone-shaped holes in soil

Larva: 1/2" long, square, flattened head, plump abdomen, enormous sickle-like jaws extend from head

Adult: Up to 2" long, mottled brown color, transparent wings, clubbed, curved, short antennae

Management

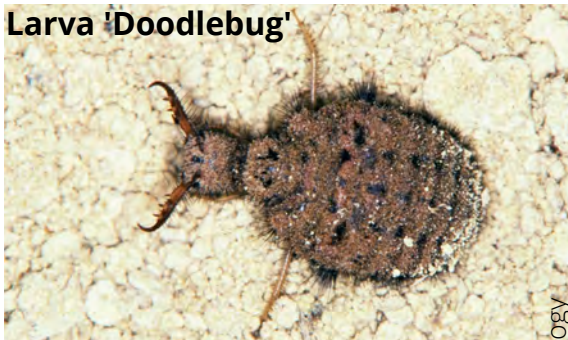
- No management required
- Chemical treatment is not needed
- Beneficial insect because of pest control services
- Doodlebugs cause no damage to plants or landscape and do not bite



J. Green



J. Green



Larva 'Doodlebug'



Adult

UNL Department of Entomology