

A Bug's Life

Acrobat ant

Crematogaster lineolata

Fun facts

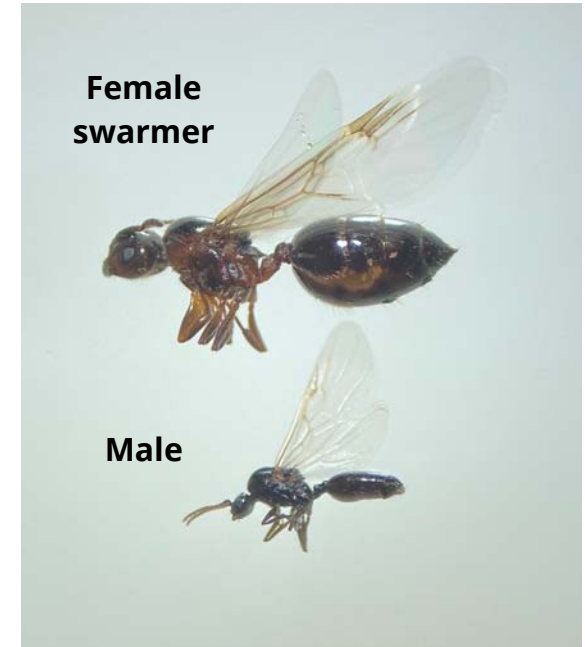
- Named because of behavior of holding abdomen up when disturbed
- Nests usually found outdoors under items, may nest indoors in areas of high moisture, especially bathrooms
- Can trail long distances
- Sugar feeding ants that feed on honeydew from aphids feeding on plants

Identification

Damage: Materials kicked out of door frames or window frames like insulation or wood shavings, workers, swarmer (with wings)
Workers: 2-nodes, 1/8" long, pair of spines on thorax, heart-shaped abdomen or gaster, may be reddish-brown to black in color

Management

- May sting and bite when disturbed
- Use outdoor bait stations with liquid sugar bait, placed as close to trails
- During mating swarm, baits will not be effective, so it's best to sweep or vacuum up ants and seal up entrance
- If nest is confirmed inside, locate nest and treat directly with labeled insecticide (dust or liquid, follow label)



Photos: J. Green