

BUFFALO COUNTY 4-H



Nebraska Extension-Buffalo County 1400 E. 34th St. Kearney, NE 68847 (308)-236-1235 buffalo.unl.edu

CALENDAR

January

- 1 Extension office closed – New Year’s Day
- 5 Deadline for 4-H Foundation scholarships
- 11 Deadline to sign up for Intro to Birds workshop
- 15 Extension office closed - Martin Luther King Jr. Day
- 15 Deadline to sign up for Tracks & Scat Workshop
- 16 Intro to Birds of Nebraska - Homeschooled youth
- 20 Tracks & Scat Workshop
- 23 4-H Council meeting
- 31 Deadline for Club Treasurer Reports

February (4-H Month)

- 12 Deadline to sign up for Special Garden Project
- 24 Market Beef Weigh In
- 26 4-H Council meeting

MAKING THE BEST
BETTER



2024
H A P P Y N E W Y E A R

WISHING YOU ALL
MANY BLESSINGS IN
THE NEW YEAR!

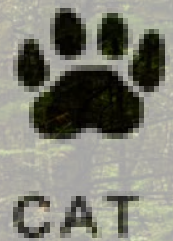
JOIN US TO LEARN FUN OUTDOOR SKILLS

TRACKS

&

SCAT

WORKSHOP



WHEN: 9:30-11:30 A.M. SATURDAY, JANUARY 20

WHERE: BUFFALO COUNTY EXTENSION

WHO: YOUTH AGES 5-18

COST: \$5 DUE UPON REGISTRATION

DEADLINE TO SIGN UP: MONDAY, JANUARY 15TH AT

[HTTPS://SSP.QUALTRICS.COM/JFE/FORM/SV_6YIKX260BTFMCJS](https://ssp.qualtrics.com/jfe/form/sv_6yikx260btfmcjs)



striped
skunk



bobcat



elk



Nebraska 4-H Foundation scholarship applications due January 5

The Nebraska 4-H Foundation awards up to \$22,000 worth of scholarships each year to 4-H'ers from across the state. To apply for scholarships, 4-H'ers must submit the Nebraska 4-H Achievement Application for state-level review by **January 5th**. Youth must follow the application instructions available at <https://4h.unl.edu/achievement-application>. If applying for multiple scholarships, only one Achievement Application should be submitted. If **ONLY** applying for the Joe Citta, Jr. Scholarship for Outdoor Stewardship, please utilize the scholarship application link provided on the Foundation site.

Club Treasurer Reports due Jan 31 New form includes inventory list

All club leaders were mailed a copy of the 2023 Treasurer Report in December. Please note that this form has been updated since the last time you submitted your report. This report will be used to file an e-postcard with the IRS on your club's behalf. If you do not have funds in the name of 4-H, please note that on the form and turn into the office. You can find the form on our site at <https://extension.unl.edu/statewide/buffalo/leader-resources/>. Please mail to 1400 E 34th St. Kearney, NE 68847 or submit via email by **January 31** to jenny.kreikemeier@unl.edu.

Add beauty to your garden and your plate 2024 Special Garden Project is Princess of India Nasturtium



The Special Garden Project is a way to offer Nebraska youth the chance to grow unusual and fun projects in their gardens. The 2024 Special Garden Project will focus on Princess of India Nasturtium. This Victorian-era heirloom flower can be grown in a variety of ways including in containers. It provides a splash of color from its scarlet flowers and much of the plant can be eaten.

When enrolling youth in 4-H, please select Horticulture/Plant Science as the project area for the Special Garden Project. Please call 308-236-1235 to sign up and to get your seeds ordered. Seeds will be around 50 cents per packet. Educational materials and a growing newsletter will be given to all participants when seeds are picked up.

DEADLINE TO SIGN UP: FEBRUARY 12

Buffalo County weigh-in date set

To be eligible for the Rate of Gain contest, your market beef must be weighed at an official 4-H weigh-in at any county 4-H weigh-in day. **If you plan to attend another county's weigh-in, you must pick up an ID sheet and purchase tags from the Buffalo County Extension before going.** Anyone showing at State Fair will need to pull DNA. If you don't wish to participate in the Rate of Gain contest, you do not need to attend a weigh in. You may pick up your ear tags from the Extension office any time.

Buffalo County Weigh-In

When: 10 a.m. to 2 p.m. Saturday, February 24, 2024

Where: M&M Feeders at Elm Creek

Tags: \$3 each

This date is subject to change.

Other county 4-H weigh-in dates:

Hall - 8 a.m. to 11 a.m. January 6th at Platte Valley Vet Clinic in Alda. Please contact Hall County Extension at 308-385-5088 to let them know you are planning on bringing your animals to their weigh-in.

Howard/Sherman - 9-11 a.m. January 27 at St. Paul Vet Clinic - 1373 Hwy 281 & 1-3 p.m. January 28 at Lambrecht farm, 5 miles north of Loup City at 79387 Highway 58

What is the Average Daily Gain Contest?

Excerpt from Buffalo County Fair Premium Book:

Average Daily Gain Contest

Weights collected during county weigh-in will be used to calculate average daily gain. The amount of weight gained will be divided by the number of days between the weigh-in date and weigh-in at county fair. Each exhibitor will have their highest placing beef entered into the average daily gain contest. Additionally, to be eligible to compete in the rate of gain contest, market beef animals must weigh between 900-1600 pounds. Results will be announced after the 4-H Beef Show, and premiums will be awarded to each exhibitor, with an additional monetary award given to the top 10 finishers. The top 10 awards are sponsored.

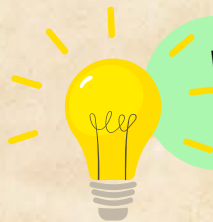


Sincerely Kerry Elsen - 4-H Extension Educator, Jordan Wilbur & Heidi Darby - 4-H Assistants

Time to enroll in 2023-24 4-H year

All youth and volunteers need to register

The 4-H enrollment site is now open for returning 4-H members, volunteers and to newcomers who have not yet joined. Shooting sports members must be enrolled in 4-H to practice and participate. Please visit <https://v2.4honline.com/#/user/sign-in> to enroll. **To complete the enrollment process, you must select the 'pay by check' option regardless of your chosen payment method and you must select 'submit' at the end of the process.** If you choose to pay by cash or check, just drop your payment off at the Extension office or mail to 1400 E. 34th St. Kearney, NE 68847. If you wish to pay online by debit/credit card, you can visit the Buffalo County payment site at <https://buffalo-county-4-h-council.square.site/>.



When you enroll in 4-H, please use an email that you check regularly as this will be how you will stay informed of what's happening in our program.

Buffalo County screening all volunteers

This year Buffalo County will undergo a re-screening of all volunteers. When enrolling, volunteers must select **Program Volunteer - Selected for Required Screening** as their role. If this role is not selected, your enrollment will be sent back to you. By selecting this role, you will be directed to a screening link for DHHS. Please complete all the required forms.

ENROLLMENT FEES

Clover Kids: \$5

Clover kids are youth ages 5 to 7, as of January 1, 2024.

Traditional 4-H members: \$10

Traditional 4-H members are youth ages 8 to 18, as of January 1, 2024.

- Families have a maximum fee of \$30

WAYS TO STAY CONNECTED TO 4-H

Visit our website to see what's happening in 4-H:
<https://extension.unl.edu/statewide/buffalo/>



Buffalo County NE 4-H



Buffalo County 4-H

You Belong



State fair opportunity for swine exhibitors

A Farrowed and Owned Breeding and Market Swine division for youth interested in learning more about the swine industry is available again at the Nebraska State Fair in 2024. The Nebraska 4-H Farrowed and Owned Swine Cohort enhances the traditional 4-H swine project. To participate, youth must be 4-H age 10-18 as of January 1, 2024, complete the YQCA, farrowed their project animal(s) and participate in monthly virtual educational meetings.

Youth participating in the Farrowed and Owned Cohort will:

- Network with 4-H members across the state
- Receive knowledge about nutrition, feeding, genetics and other topics from Extension Swine specialist, Benny Mote
- Learn about swine industry
- Maintain swine management/basic care records
- Exhibit their project animals at 2024 Nebraska State Fair with opportunity for special recognition for completing Cohort



Register by January 5 to participate in a special virtual educational session on farrowing by visiting https://ssp.qualtrics.com/jfe/form/SV_8CalkUxQv49Drue. **Deadline to register for the Cohort is February 1.** Once registered, you will receive additional information via email.



NCC Livestock Judging Contest is Feb. 17

Entry deadline is February 5. The contest will be held in Kearney at the Buffalo County Fairgrounds. For more information and to register, please visit <https://nebraskaclassic.org/winter-edition/judging-contest.php>.



Find other activities by visiting:

<https://extension.unl.edu/statewide/buffalo/area-shows-clinics-activities/>