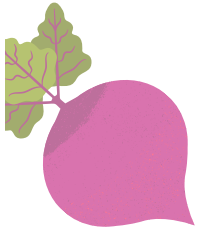




# GROW-A-ROW

Help Fight Hunger This Year By  
Growing An Extra Row Of Produce  
In Your Garden And Donating That  
Harvest To The Antelope County  
Food Pantry



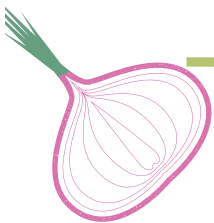
---

## Produce Drop Off Site & Times

8:00 am - 4:30 pm

Antelope County Extension Office

*If you are donating highly perishable  
products such as lettuce, tomatoes, et.,  
bring the produce the same week the  
food pantry will be open.*



---

Antelope County Food Pantry

11:30 am - 1:30 pm

1st and 3rd Thursdays

