



4-H NEWSLETTER



Here's what to look out for in the upcoming month!

Colfax County Office
(402) 352-3821

KateLynn Ness
4-H Extension Educator

Erin Trotter
4-H Extension Assistant
etrotter4@unl.edu

Brenda Dolezal
Office Manager
bdolezal2@unl.edu

Office Update:

The Extension office will be closed on *Thursday, June 19th* in observance of Juneteenth and *Friday, July 4th* for Independence Day.

School is out and we are officially in summer mode! For some that may mean a more relaxed schedule, and for some that just means a different kind of busy. Our office has a lot of fun activities lined up for the summer so be sure to watch for all of those dates and deadlines. All members should be enrolled in 4-H Online and have their projects selected by now. There is a lot of information that gets sent via 4-H Online so anyone that has not completed enrollment yet is missing out! Feel free to contact the office with any questions or issues. Fair Season is quickly approaching! It can seem like information overload so please take note of all of the enclosed updates and deadlines so county fair week can run smoothly and we can provide a positive experience for our 4-H youth.

Let's have a great summer!

Upcoming Events:

June 13th: State Fair
Livestock DNA
envelopes due, Colfax
County Fair pre-entry
deadline

June 15th: Nebraska State
Fair livestock
nominations deadline

June 17th: 4-H Council
Meeting, 7pm at
Clarkson Library

June 17-18th: PASE,
Lincoln

June 19th: Extension
Office closed,
Juneteenth holiday





Colfax County 4-H Council College Scholarship

The 4-H Council will be providing \$250 college scholarships for qualifying Colfax County 4-H youth. The scholarship applications have been mailed out to the potential candidates.

Any youth that are planning on applying for the scholarship will need to meet the following requirements and include them on their 4-H resume:

1. The youth needs to be enrolled in a postsecondary institution following high school graduation. This includes 4-year colleges and universities, 2-year community colleges, or trade schools.
2. The youth needs to have shown an animal and/or entered a static exhibit in the Colfax County Fair during the summers following their Junior and Senior year of high school.

3. The youth must meet a minimum of 2 of the following criteria:

- Worked 1 food stand shift in the summers following Junior & Senior year
- Participated in the Holiday Fundraiser both Junior and Senior year
- Contributed to a community service project with their 4-H club as a Junior and Senior
- Attended a minimum of four 4-H Club meetings your Junior and Senior years
- Served as a 4-H Council Member your Junior and Senior year
- Other area of service during Junior and Senior year (Quilt of Valor, Junior Leader, Fair Volunteer, etc.)

Qualifying youth will need to submit the scholarship form, 4-H resume, and copy of their college class schedule to the Extension office by **August 8th**.



Welcome KateLynn!

We are excited to welcome KateLynn Ness back to the office, now in her new role as 4-H Educator for Colfax and Butler counties. KateLynn's first day in the office was on June 2nd and she's jumping right in to all the summer activities! She is still getting her email and UNL employee information set up so we will be sharing her updated contact info when it is available. Feel free to contact the Extension office to say hello! Here's a message from KateLynn:

"My name is Ms. KateLynn and I am so excited to be returning to 4-H and Colfax County as the Colfax and Butler Counties' 4-H Youth Development Extension Educator. I cannot wait to meet and see everyone! I love to learn, and help youth both identify and pursue their passions. I was a ten year 4-H member of Dodge county, and also involved with FFA, FCCLA, and Speech. The strong mentors I still keep in touch with from these experiences is what led me to pursue an Agricultural Education teaching degree, and later from the recommendations of a good friend and mentor, a Masters in Youth Development. I was a previous Agricultural Education Advisor, 4-H Assistant, and JAG Nebraska Career Specialist. I have loved building relationships, mentoring youth, and learning from every professional experience. I am thrilled to be returning to the 4-H communities!

Fun facts about me are that I love the color purple, sunflowers, corgis, poultry, traveling, and penguins! I am so excited to meet everyone, and for all the fun to be had!"

Sincerely,
KateLynn J. Ness

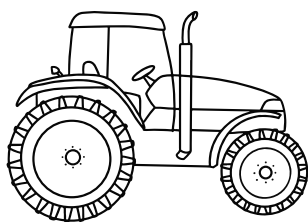


Events & Opportunities



Summer Workshops

We are excited for a summer filled with fun learning opportunities! We have begun our Summer 2025 workshop season in a variety of project areas! See the attached flyer for the list of workshops and dates. Please also take note of the registration deadlines, fees, and supplies needed for each workshop - they are filling up quickly. Thanks to our dedicated volunteers for helping us make these happen!



2025 Tractor & Equipment Safety Training

The 2025 Tractor & Equipment Safety Training schedule is now available. Federal law restricts youth under 16 from using certain farm equipment unless their parents or guardians own the farm, however 14 and 15 year olds can earn an exemption by completing a two-day certification course.

Register Today!

SESSIONS INCLUDE:

- Navigate and drive virtual heavy equipment simulators
- Behind the wheel experience with a variety of Heavy Equipment Pieces
- Learn about the Hastings CCC Heavy Equipment Program
- Career panel
- Optional campus tours

Cost: \$35
Registration Opens: March 1, 2025
Registration Link: <https://go.unl.edu/heavyequipment>
Registration Deadline: Friday, June 13 by 5 pm CT
Contact Info: Beth Janning
 ejanning@unl.edu
 402-461-7209

HEAVY EQUIPMENT CAREER EXPLORATION
MONDAY, JUNE 23, 2025
CENTRAL COMMUNITY COLLEGE - HASTINGS
 Registration open to students in 8th - 12th grade in fall of 2025

CHECK-IN: 9:30 AM - 10:00 AM
LUNCH INCLUDED
WRAP-UP: 4:30 PM
 OPTIONAL TOURS AVAILABLE AT 4:30

SPONSORED BY: Central Community College, N Extension, LTAP

Heavy Equipment Career Exploration

Register for the Heavy Equipment Career Exploration day set for Monday, June 23rd at CCC - Hastings. Sessions include:

- Navigate and drive virtual heavy equipment simulators
- Behind the wheel experience with a variety of equipment pieces
- Learning about the Hastings CCC Heavy Equipment Program
- Career panel
- Optional campus tours

Registration cost is \$35, registration will close on Friday, June 13th at 5pm or until all spots are filled. Register at: <https://go.unl.edu/heavyequipment>

2025 TRACTOR & EQUIPMENT SAFETY TRAINING
MARK YOUR CALENDAR! COST: \$60

Federal law restricts youth under 16 from using certain farm equipment unless their parents or guardians own the farm. However, 14- and 15-year-olds can earn an exemption by completing a two-day certification course, which includes a written test and a driving exam. Successful completion grants NHTSA's certification, allowing them to operate tractors and certain mechanized equipment on farms and ranches, and obtain a husbandry permit.

Youth under 14 years of age can attend Day 1 if accompanied by an adult but cannot drive equipment, attend Day 2, or become certified. Students under 14 must register but won't be charged a fee.

Date(s)	Event(s)	Location
May 21	Day 1	West Point, NE
May 22	Day 2	West Point, NE
May 27	Day 2*	Weeping Water, NE
May 28	Day 1	North Platte, NE
May 29	Day 2	North Platte, NE
June 3	Day 1	Gering, NE
June 4	Day 2	Gering, NE
June 5	Day 2*	Chadron, NE
June 9	Day 1	Grand Island, NE
June 10	Day 2	Grand Island, NE
June 11	Day 1	O'Neill, NE
June 12	Day 2	O'Neill, NE
June 17	Day 1	York, NE
June 18	Day 2	York, NE

LEARN MORE
 Scan the QR code or visit www.nrdnet.org/nrds/lower-elkhorn-nrd

QUESTIONS? CONTACT KELSEY IRVINE @ KEPALMB@UNL.EDU

Extension is a division of the Institute of Agriculture and Natural Resources at the University of Nebraska-Lincoln, cooperating with state and federal U.S. Department of Agriculture. Funding provided to Central States Center for Agricultural Safety and Health by NIOSH grant 1D42000001.



Lower Elkhorn NRD Camp Scholarships

The Lower Elkhorn Natural Resources District has a scholarship program for 4-H and NRD summer camps throughout the 15 county district. They will reimburse the winning applicants for their camp registration fee. Scholarships are available for various 4-H and NRD sponsored camps around the state, including the Nebraska Range Youth Camp, and Adventure Camp about the Environment (ACE Camp). The camp must be agriculture or natural resources related. Applicants must reside or have land in the LENRD boundaries. 4-H scholarship winners must register for the camp of their choice and pay for the registration fee. Scholarship winners will be reimbursed after they send camp attendance verification to the LENRD office. All applications must be received by **Friday, June 20th**.

A map of the District boundaries can be found at: <https://www.nrdnet.org/nrds/lower-elkhorn-nrd>
 Contact Liz Lienemann at llienemann@lenrd.org with questions.



Youth Crop Scouting Competition

Nebraska Extension's Youth Crop Scouting Competition is an annual immersive event that provides students with an opportunity to learn the principles of integrated pest management (IPM) for corn and soybeans, while exploring emerging crop scouting technologies and gaining valuable experience for future careers in the ag industry.

The contest will be held at the Eastern Nebraska Research and Extension Center near Mead on August 5, 2025. Registration is open until **July 15th**.

More information and registration instructions are available at cropwatch.unl.edu/youth.

Eligibility:

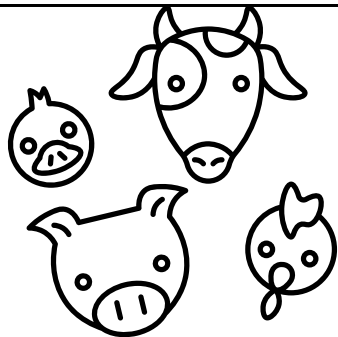
4-H members or FFA members who have completed 5th-12th grades may participate as a team of 3-5 participants. If you are interested in participating or would like to learn more, please contact Steve Nelson, Colfax County team coach at 402-720-3774 as soon as possible.

The competition is limited to 10 teams.

Awards:

Cash prizes are awarded to the top three teams. Top two teams qualify for regionals in Iowa.

- First place - \$500
- Second place - \$250
- Third place - \$100



Platte County Livestock Events

Platte County 4-H is excited to announce two fantastic opportunities for youth 4-H members. The Platte County Livestock Judging Contest will be held on **June 10th**, and the Platte County 4-H Showmanship Clinic will be held on **June 14th**. Both events will take place at Ag Park in Columbus and would a great way for 4-H members interested in livestock to gain valuable experience.

Contact Blake Wert at bwert3@unl.edu with any questions.

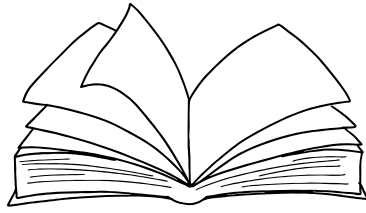


4-H Plant and Insect ID Contests

If you like plants and/or insects, Platte County is hosting the 4-H Plant and Insect Identification Contest on Thursday, June 26th at the Ag Park Exhibit Hall Club Room in Columbus. 4-H'ers can build skills and participate in any of the 4 events: Entomology ID, Grass and Weed ID, Tree ID, and Horticulture Judging and ID.

Registration is due by Tuesday, **June 24th**. See the attached flyer for more info.

Colfax County Fair



Fair Books

The 2025 Colfax County Fair books are available to pick up in the Extension office. Please check first with your club leader as some leaders have already picked up books for their clubs.

The fair book and other county fair information can also be viewed online at:

<https://extension.unl.edu/statewide/colfax/colfax-county-fair/>

In the fair book, classes with SF written at the end are also eligible to be entered to the State Fair.



County Fair Clean-Up & Superintendent's Meeting

The fairground clean-up will be on **Monday, July 14th from 4-8pm**. Your 4-H club leader will receive a letter with a schedule and cleaning assignment. Independent members will receive a letter and are expected to help out as well. Superintendents for the Exhibit Building are requested to attend a meeting at the fairgrounds on **Monday, July 14th at 6pm**. A reminder letter will be sent to each superintendent. At the meeting, we will discuss the duties and any questions you may have.



Livestock Nomination & ID Requirements

The 2025 updated versions of all livestock I.D. Requirements for the Nebraska State Fair and the Colfax County Fair are attached at the end of the newsletter. Please contact the Extension office if you have any questions.



Ethics Affidavit & Statement of Disclosure

The form is included with this newsletter. It is required for everyone showing **Market** and **Dairy** animals at the fair. It is not required for breeding livestock.

1. Use the form included here, and use only the **one** form for all family members. Turn it into the Extension Office along with your fair pre-entries by **June 13th**.
2. Circle all species of Market livestock that your family will be exhibiting at the fair.
3. Have all family members/exhibitors: 1) print their name at the top and 2) sign their name at the bottom. Be sure the parent/guardian also signs.

IAFE (International Association of Fairs and Expositions) Code of Show Ring Ethics

The IAFE form is included in the newsletter for families exhibiting livestock to read and review. This includes guidelines for livestock exhibitors to follow.



Dress Code for Animal Exhibitors

All exhibitors showing beef, dairy, poultry, small animals, goats, cats, sheep, swine, and rabbits are required to wear a Colfax County 4-H t-shirt, plain white shirt (including t-shirt) or blouse with the official 4-H chevron attached, or a national 4-H t-shirt. Club shirts are not allowed. Dark blue jeans are required for beef, cat, sheep, swine, goats, small animals, poultry, and rabbit exhibitors. Dairy and dairy goat exhibitors may wear dark blue jeans or white pants. All animal exhibitors must wear closed toe shoes, no sandals allowed. No hats, cap, or other type of headgear are to be worn in the show ring. Exhibitors shall not display commercial or other identification while showing their animals except for official 4-H or other required ID for the show ring. Horse exhibitors must have armbands to enter the arena.

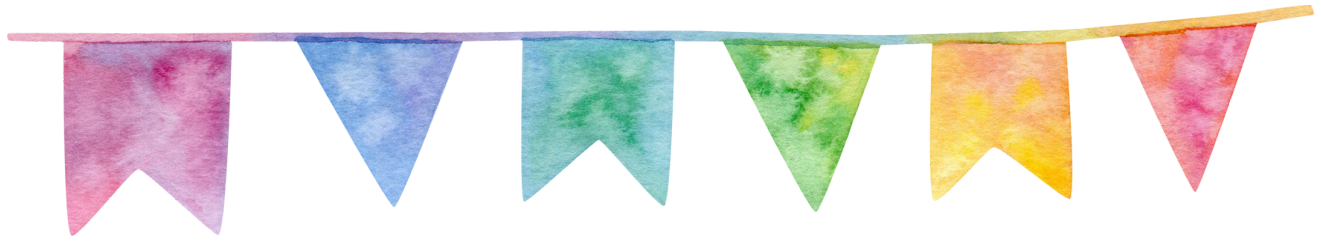


Other Livestock Reminders

Animals shown for showmanship must also be shown in another class. Exhibitors cannot bring an animal just for showmanship.

Clover Kids MUST inform all Livestock Superintendents of their intention to show an animal by 9pm on Wednesday, July 16th. Animals will go home after the show.

Colfax County Fair



Pre-Entry for 2025

Pre-Entry worksheets are due to the Extension Office by **4:30pm on June 13th**. These forms were mailed out. If you did not receive them, please call the Extension office at 402-352-3821. Here are some hints for completing the pre-entry sheets:

- Each 4-H youth exhibiting livestock and/or static items in the 4-H building needs to complete a pre-entry sheet.
- Please include showmanship on your livestock form
- Only one exhibitor per entry sheet
- The pre-entry sheets have been sent to each 4-H member in a separate mailing
- Only one exhibit per class number
- Worksheets turned in after the deadline automatically lose one ribbon placing
- Please allow for several extra days if you are sending the sheets in to the office by mail.
- If sending by fax, contact us to confirm it was received.
- List all the items you plan to exhibit, or could potentially exhibit. If you list an item, but end up not bringing the item, that is ok. However, if you bring an exhibit that is not listed on the pre-entry sheet, it will not be accepted and you will be encouraged to enter the item in Open Class.
- For horticulture, please list everything you might possibly bring (example: slicing cucumbers, red potatoes, roma tomatoes).
- Pre-entry sheets can also be found online: <https://extension.unl.edu/statewide/colfax/colfax-county-fair/>

Other Fair Notes

- If any adult or teen volunteers are interested with helping out during static judging days, please contact the Extension office to sign up. Meal and refreshments will be provided.
- All 4-H Club and Independent members will be asked to help clean the fairgrounds on the Monday of fair week and work at the food stand. We need all members to help throughout the year and especially at fair time for Colfax County 4-H to be successful!
- The use of copyrighted materials such as cartoon characters or product names is **prohibited** unless it is on purchased fabric. Please avoid using decals or stickers for your fair projects.
- Please note that the 4-H exhibit hall will be **closed** to the public during judging on both Tuesday, July 15th and Wednesday, July 16th.
- Entry tags will be based off pre-entry sheets and printed by the Extension office. This will be for ALL exhibits- static and livestock. We will send an email when tags are ready to be picked up.



Pig Wrestling

Schuyler FFA will once again be sponsoring the pig wrestling event on Sunday, July 20th starting at noon. Teams of 4 participants are designated by age division: Junior Youth (8-12 years), Senior Youth (13-18 years) and Adult (19+). \$50/team, limited to first 10 teams who register per age division. All team members must provide a waiver agreement. Registration and waiver forms will be available at the Extension office. Make checks payable to Schuyler FFA and send to 401 Adam St. Schuyler, NE 68661. Contact Hal Moomey at 308-293-3030 or hal.moomey@schuylercommunityschools.org with questions.

Colfax County Fair



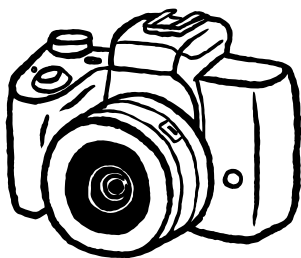
4-H Building Entry Time

Reminder of judging day schedule for static exhibits:

Tuesday, July 15th 9am-1pm: check-in for Clothing, Home Design and Restoration, and Photography exhibits.

Tuesday, July 15th 5pm-7:30pm: check-in for all 4-H exhibits except Clothing, Home Design and Restoration, and Photography.

Wednesday, July 16th 8am-10am: check-in for all 4-H exhibits except Clothing, Home Design and Restoration, and Photography



Photography Exhibits

Be sure to attach a personal data tag to your photography exhibit. See the fair book for details. Contact the Extension office if you would like to receive an email copy of the Data Tag or stop by the office to pick up a copy. They can also be found on the website:

<https://extension.unl.edu/statewide/colfax/colfax-county-fair/>



NEW Fair Book Item

We have a new class in the the fair book for 2025 - cake pops! Found on page 82: Department E, Division 420 - Cake Decorating (Special Decorated Exhibits), Class 26. "Four to six cake pops. MUST be creative in design/theme (example: holiday, farm, sports, etc.). Can be displayed by placing sticks in styrofoam or on a plate with the stick facing up. Styrofoam or plate can be no larger than 8" round or square"

Try something new and have fun!



County Sewing Project Requirements

Reminder! All entries must include pictures of assembly and/or 4-H member wearing clothing item(s) or holding non-clothing item(s). Items made from new bolt material need pictures of 4-H member wearing or holding the finished product. If item is an upcycled garment, the 4-H member must include pictures of the item before deconstruction, during construction, and of the final product worn or held by the 4-H member.



Exhibit Building Policy Reminder

As stated in the fair book on pages 7 & 8: "No articles or animals entered for exhibition will be allowed to be removed from the location assigned until 6:00pm on the closing day of the fair. Vehicles and trailers must be moved to approved parking areas after entries have been received. No trailers are allowed to be permanently parked between the horse area (directly East) and directly West of the cattle, cattle fitting, and hog barns. Colfax County Agricultural Society will notify once of need to move trailers, if not immediately moved, the Society will move identified trailers to approved trailer parking areas. This will also apply to other vehicles which are determined to be impeding parking and/or traffic flow"

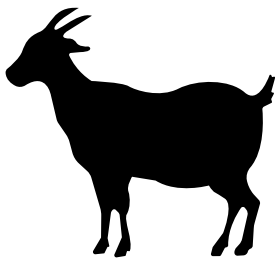
Any article or animal in any division (4-H, FFA, or open class) that is removed from the items or animals exhibit prior to the announced check out time without the consent, in writing, of the Colfax County Agricultural Society Board will forfeit ribbons, trophies, banners, premium money, and recognition.



2025 State Fair Livestock Nominations

Show Stock Manager is open for livestock nominations for the 2025 Nebraska State Fair. All livestock in contention to exhibit at the State Fair will be required to complete an online nomination with payment through Show Stock Manager and submit a DNA collector envelope with a hair sample. All 4-H and FFA livestock nominations are due **June 15th, 2025**.

<https://showstockmgr.com/>
Contact the Extension Office at (402) 352-3821 with questions.



Sheep & Goat Tags & DNA

Market and Breeding sheep and goats will need scrapie tags and DNA samples pulled in order to be shown at the Nebraska State Fair. The deadline to have DNA samples to the Extension office is **June 13, 2025** by 4:30pm. County only market sheep and goats will need a scrapie tag to be eligible to show at the Colfax County Fair.

State Fair Tags and DNA Testing

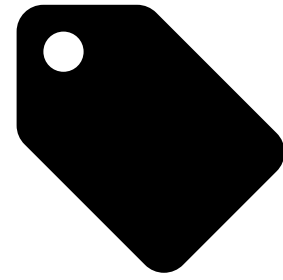
All beef and swine animals to be shown at the 2025 Nebraska State Fair must have an EID tag installed and hair pulled for DNA samples. Registered breeding beef will continue to use a tattoo. EID tags will cost \$3.75 and DNA testing costs \$7.00 per animal. Contact the office to get animals tagged and the hair samples pulled.



Online Horticulture Judging Contest

Do you know what it takes to pick the best fruits and vegetables at the grocery store? Or do you know what the judges are looking for when they judge your plant projects at the county fair? The Nebraska 4-H Online Horticulture Judging Contest provides youth an opportunity to test their knowledge of growing fruits, vegetables, flowers, and ornamental plants. There are 3 parts to the contest: plant ID, plant knowledge, and judging/placings. The contest will be available from **June 10-24th**.

For more information:
<https://4h.unl.edu/statewide-events-opportunities/online-horticulture-judging-contest/>



Livestock Nomination & ID Requirements

The 2025 updated versions of all livestock I.D. Requirements for the Nebraska State Fair and the Colfax County Fair are attached at the end of the newsletter. Please contact the Extension office if you have any questions.



UNL Community Resources Database

University of Nebraska-Lincoln's Engagement Collaborative and Nebraska Extension have launched a powerful new tool for communities across the state. The Community Resources Database is a one-stop site that brings over 300 UNL community resources together in one searchable place. You can find public workshops & classes, Ag & food systems info, tech resources, curriculum ideas, professional development, and much more. Check it out today:
<https://engage.unl.edu/community-resources/community-resources-database/>



Important Dates:

June 6: Soaring with Butterflies Clover Kid Workshop at Schuyler Public Library, 1:30-3:30pm

June 10: Platte County Livestock Judging Contest

June 11: Let's Paint Runways workshop at Leigh fairgrounds, 2-5pm

June 12: Wool Felting workshop at Schuyler High School, 12-3pm

June 12 -13: Welding workshop at Schuyler High School, 9am-3pm

June 13: State Fair Livestock DNA envelopes due to Extension Office by 4:30pm, County Fair pre-entry deadline for Livestock, Horse, and Static exhibits due to the Extension office by 4:30pm

June 14: Platte County Showmanship Clinic

June 15: Nebraska State Fair Livestock nominations deadline in Show Stock Manager,

June 17: Fun on the Farm Clover Kid workshop at Leigh fairgrounds, 9-11am, 4-H Council Meeting at Clarkson Library, 7pm.

June 17 - 18: PASE, Lincoln

June 19: Extension Office closed, Juneteenth holiday

June 25: Beginning Sewing workshop at Heun Church, 1-4pm

June 26: 4-H Plant and Insect ID Contest at Ag Park, Columbus

July 4: Extension Office closed for Independence Day

July 10: Favorite Food & Fashion Revue @ Heun church, 1-5pm

July 14: Clean up night at the fairgrounds, 4-8pm

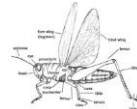
July 17-20: Colfax County Fair

Thank you for reading!

466 ROAD 10 SCHUYLER, NE 68661	402-352-3821
https://extension.unl.edu/statewide/colfax/	Nebraska Extension in Colfax County on Facebook



4-H Plant and Insect Identification Contests



*If you like plants and/or insects, here's an opportunity to build skills and have fun too!
Attend to participate in one, two, three or all four contests!*

Your interest - your choice! Bring a friend too!

4-H'ers could earn a trip to a state and/or national contest!

Thursday, June 26, 2025

Agricultural Park Exhibit Hall Club Room, Fairgrounds - 822 15th Street, Columbus NE

(Entrance to Ag Park is at intersection of 10th Av. and 15th St.)

Approximate Times after Initial Contest

12:15 - Welcome and Instructions

12:30 PM - Entomology (Insect) Identification

1:30 PM - Grass and Weed Identification

2:30 PM - BREAK with Refreshments

2:45 PM - Tree Identification

3:40 PM - Horticulture Judging and I.D.

PLEASE BRING A CLIP BOARD TO USE DURING THE CONTEST

Identify plant/insect samples for each contest. For horticulture, there is also 2 judging classes (vegetables, fruits, flowers, or nursery stock). Informational materials available at <https://4h.unl.edu/fairbook/contests>. For

Clip & return registration by Tuesday, June 24th to: UNL Extension, PO Box 389, Schuyler, NE 68661

2025 Horticulture / Tree / Insect / Grass & Weed Contests Registration

Name/s: _____ Age as of Jan. 1, 2025: _____ Phone: _____

Address: _____ E-mail: _____

County: _____ Birth Date: _____

I plan to participate in: (please check **one** division and **all** contests you plan to participate in)

Division: _____ 4-H _____ FFA _____ ADULT (for parents)

Contest: _____ Horticulture _____ Tree ID _____ Insect ID _____ Grass/Weed ID

Age Divisions (age as of Jan. 1, 2025: Clover Kids: 5 - 7, Junior: age 8 - 10; Intermediate: age 11 - 13, Senior: age 14 - 18)

Date: _____ (Circle all species exhibited) **Beef Sheep Swine Dairy Goat**

(All family members may sign on same sheet)

(Please Print) **First Name(s):** _____

Last name: _____

COLFAX COUNTY FAIR 4-H MARKET LIVESTOCK SHOW
ETHICS AFFIDAVIT AND STATEMENT OF DISCLOSURE

Youth livestock producers understand they have an obligation to be a responsible food producer. All market animals will enter the food chain and become edible products for the consuming public. Dairy animals may be producing milk that will enter the food chain.

We, the undersigned, certify that we have read and in consideration for being permitted to exhibit at the Colfax County Fair, agree and consent to abide by the rules of competition. We agree to the condition that our entries may be screened for violative residues.

We certify that these animals have not received any non-approved drug(s). We certify that our entries are not within any withdrawal time for slaughter. In exhibiting beef or sheep, we attest, that the best of our knowledge, the finishing ration fed to the animals under our ownership does not contain "prohibited" mammalian protein (i.e. ruminant meat & bone meal).

We certify that we have followed standard operation procedures to deal with the broken needles. If exhibiting swine we attest, to the best of our knowledge, that animals with broken needles have been properly identified.

If exhibiting market swine, market beef, market lambs, meat goats, dairy or dairy goats we certify that we have been trained and certified in Quality Assurance. We further certify the information provided is correct and accurate.

If violations are detected, we will not challenge the validity of testing or sampling procedures, and we will be subjected to penalties determined by show management.

We, the exhibitor/family will accept expenses of maintaining animal drug withdrawal period until slaughter, plus transportation and slaughter fees, if any

By signing we are agreeing to the Colfax County Fair Livestock Show Ethics Affidavit and Statement of Disclosure and the IAFE Code of Show Ring Ethics. The IAFE Code of Show Ring Ethics is found on the back side of this form.

Owner's/Exhibitor's Signature
(Additional family members sign below)

Parent's or Guardians Signature

IAFE (INTERNATIONAL ASSOCIATION OF FAIRS AND EXPOSITIONS) CODE OF SHOW RING ETHICS

Exhibitors of animals at livestock shows shall at all times deport themselves with honesty and good sportsmanship. Their conduct in this competitive environment shall always reflect the highest standards of honor and dignity to promote the advancement of agricultural education. This code applies to junior as well as open class exhibitors who compete in structured classes of competition. This code applies to all livestock offered in any event at a livestock show. In addition to the "IAFE Code of Show Ring Ethics," fairs and livestock shows may have rules and regulations which they impose on the local, county, state, provincial and national levels.

All youth leaders working with junior exhibitors are under an affirmative responsibility to do more than avoid improper conduct or questionable acts. Their moral values must be so certain and positive that those younger and more pliable will be influenced by their fine example. Owners, exhibitors, fitters, trainers and absolutely responsible persons who violate the code of ethics will forfeit premiums, awards and auction proceeds and shall be prohibited from future exhibition in accordance with the rules adopted by the respective fairs and livestock shows. Exhibitors who violate this code of ethics demean the integrity of all livestock exhibitors and should be prohibited from competition at all livestock shows in the United States and Canada.

The following is a list of guidelines for all exhibitors and all livestock in competitive events:

- 1) All exhibitors must present, upon request of fair and livestock show officials, proof of ownership, length of ownership, and age of all animals entered. Misrepresentation of ownership, age, or any facts relating thereto is prohibited.
- 2) Owners, exhibitors, fitters, trainers, or absolutely responsible persons shall provide animal health certificates from licensed veterinarians upon request by fair or livestock show officials.
- 3) Junior exhibitors are expected to care for and groom their animals while at fairs or livestock shows.
- 4) Animals shall be presented to show events where they will enter the food chain free of violative drug residues. The act of entering an animal in a livestock show is the giving of, consent by the owner, exhibitor, fitter, trainer and/or absolutely responsible person for show management to obtain any specimens of urine, saliva, blood, or other substances from the animal to be used in testing. Animals not entered in an event which culminates with the animal entering the food chain shall not be administered drugs other than in accordance with applicable federal, state and provincial statutes, regulations and rules. Livestock shall not be exhibited if the drugs administered in accordance with federal, state and provincial statutes, regulations and rules affect the animal's performance or appearance at the event. If the laboratory report on the analysis of saliva, urine, blood, or other sample taken from livestock indicates the presence of forbidden drugs or medication, this shall be prima facie evidence such substance has been administered to the animal either internally or externally. It is presumed that the sample of urine, saliva, blood, or other substance tested by the laboratory, to which it is sent, is the one taken from the animal in question, its integrity is preserved and all procedures of said collection and preservation, transfer to the laboratory and analysis of the sample are correct and accurate and the report received from the laboratory pertains to the sample taken from the animal in question and correctly reflects the condition of the animal at the time the sample was taken, with the burden on the owner, exhibitor, fitter, trainer, or absolutely responsible person to prove otherwise. At any time after an animal arrives on the fair or livestock show premises, all treatments involving the use of drugs and/or medications for the sole purpose of protecting the health of the animal shall be administered by a licensed veterinarian.
- 5) Any surgical procedure or injection of any foreign substance or drug or the external application of any substance (irritant, counterirritant, or similar substance) which could affect the animal's performance or alter its natural contour, confirmation, or appearance, except external applications of substances to the hoofs or horns of animals which affect appearance only and except for surgical procedures performed by a duly licensed veterinarian for the sole purpose of protecting the health of the animal, is prohibited.
- 6) The use of showing and/or handling practices or devices such as striking animals to cause swelling, using electrical contrivance, or other similar practices are not acceptable and are prohibited.
- 7) Direct criticism or interference with the judge, fair or livestock show management, other exhibitors, breed representatives, or show officials before, during, or after the competitive event is prohibited. In the furtherance of their official duty, all judges, fair and livestock show management, or other show officials shall be treated with courtesy, cooperation and respect and no person shall direct abusive or threatening conduct toward them.
- 8) No owner, exhibitor, fitter, trainer, or absolutely responsible person shall conspire with another person or persons to intentionally violate this code of ethics or knowingly contribute or cooperate with another person or persons either by affirmative action or inaction to violate this code of ethics. Violation of this rule shall subject such individual to disciplinary action.
- 9) The application of this code of ethics provides for absolute responsibility for an animal's condition by an owner, exhibitor, fitter, trainer, or participant whether or not he or she was actually instrumental in or had actual knowledge of the treatment of the animal in contravention of this code of ethics.
- 10) The act of entering an animal is the giving of consent by the owner, exhibitor, fitter, trainer, or absolutely responsible person to have disciplinary action taken by the fair or livestock show for violation of this Code of Show Ring Ethics and any other rules of competition of the fair or livestock show without recourse against the fair or livestock show. The act of entering an animal is the giving of consent that any proceedings or disciplinary action taken by the fair or livestock show may be published with the name of the violator or violators in any publication of the International Association of Fairs and Expositions, including Fairs and Expos and any special notices to members.
- 11) The act of entering of an animal in a fair or livestock show is the giving of verification by the owner, exhibitor, fitter, trainer, or absolutely responsible person that he or she has read the IAFE Code of Show Ring Ethics and understands the consequences of and penalties provided for actions prohibited by the code. It is further a consent that any action which contravenes these rules and is also in violation of federal, state, or provincial statutes, regulations, or rules may be released to appropriate law enforcement authorities with jurisdiction over such infractions.

County Fair I.D. Tag Requirements

Livestock Division	Form of ID	Deadline
Market Beef	4-H Ear Tag or EID Tag & ID Sheet	June 2 (Not eligible for rate of gain after April 15 th)
Breeding Beef	Tattoo, EID Tag, or 4-H Ear Tag & ID Sheet	June 2
Feeder Calves	4-H Ear Tag or EID Tag & ID Sheet	June 2
Bucket Calves	4-H Ear Tag & ID Sheet	June 2
Market Goats	Scrapie Tag & ID Sheet	June 2
Breeding Goats	Scrapie Tag & ID Sheet	June 2
Dairy Goats	Scrapie Tag & ID Sheet	June 2
Market Sheep	Scrapie Tag & ID Sheet	June 2
Breeding Sheep	Scrapie Tag & ID Sheet	June 2
Dairy Cattle	ID Sheet	June 2
Market & Breeding Swine	Ear notches or EID Tag & ID Sheet	June 2
Rabbit	Tattoo and ID Sheet	June 2
Poultry	No ID Sheet Required	
Horse	ID Sheet Drawing	June 2
Cats & Small Pets	No ID Sheet Required	

2025 4-H State Fair Animal Nomination/Identification Requirements

Project Area	Nomination Requirements	Nomination Deadline	Entry Deadline
Market Beef*	EID Tag, DNA Envelope & animal information submitted online via Show Stock Manager database.	June 15	August 10 8:00 PM CST
Registered Breeding Beef	Tattoo or identification type that is accepted by the breed association***, DNA Envelope & animal information submitted online via Show Stock Manager database.	June 15	August 10 8:00 PM CST
Commercial Breeding Beef	Tattoo OR EID Tag, DNA Envelope & animal information submitted online via Show Stock Manager database.	June 15	August 10- 8:00 PM CST
Feeder Calf	EID Tag, DNA Envelope & animal information submitted online via Show Stock Manager database.	June 15	August 10 8:00 PM CST
Market Swine*	EID Tag, DNA Envelope & animal information submitted online via Show Stock Manager database.	June 15	August 10 8:00 PM CST
Breeding Swine*	EID Tag, DNA Envelope & animal information submitted online via Show Stock Manager database.	June 15	August 10 8:00 PM CST
Market Sheep	Scrapie Tag, DNA Envelope & animal information submitted online via Show Stock Manager database.	June 15	August 10 8:00 PM CST
Breeding Sheep	Scrapie Tag, DNA Envelope & animal information submitted online via Show Stock Manager database.	June 15	August 10 8:00 PM CST
Market Goats	Scrapie Tag, DNA Envelope & animal information submitted online via Show Stock Manager database.	June 15	August 10 8:00 PM CST
Breeding Goats	Scrapie Tag, DNA Envelope & animal information submitted online via Show Stock Manager database.	June 15	August 10 8:00 PM CST
Rabbits & Poultry	No nomination required. Rabbits will be required to have an ear tattoo by the show entry deadline.	-----	August 10 8:00 PM CST
Dairy Cattle	No nomination required. Refer to the Nebraska State Fair Open Class Entry Book for ID requirements.	-----	Refer to the Nebraska State Fair website.

*Review individual fairbooks for registered animal requirements as there are additional items required to be exhibited in a breed class at State Fair, but not to be nominated.

**The Nomination Deadline is when all tagging is to be finished, animal information should be submitted online via the Show Stock Manager database, DNA collected and complete DNA Envelopes should be in the possession of the County Extension Offices.

***Registered heifer identification must correspond with the registration paper.

Family Responsibilities:

1. Exhibitors will be required to enroll in 4-H by the June 15 statewide enrollment deadline.
2. Exhibitors will review their species fairbooks.
3. Exhibitors showing market and/or breeding beef, feeder calves, market and/or breeding swine, market and/or breeding sheep or market and/or breeding goats at State Fair must have a signed and sealed official DNA envelope with hair samples for DNA verification. **Every animal nomination (this includes all breeding animals and feeder calves) will require a DNA submission.** DNA must be turned into their county office and have completed the online nomination with payment in *Show Stock Manager* by June 15. Any animal carrying an 840 EID tag will require the exhibitor to obtain a Premises ID. Contact the local Extension Office for details. (It is recommended that you make a copy or a photo image of the completed envelope you turn into your county.)
4. Exhibitors will be required to complete Youth for the Quality Care of Animals (YQCA) certificate by August 10.
5. Exhibitors will confirm that the ear tattoo and/or identification tag matches the animal nomination submitted by June 15 for confirmation of legibility and/or accuracy.
6. Exhibitors will notify the County Extension Staff of any retags that may occur up to time of check-in at the State Fair.
7. Exhibitors will select which animal nominations they have chosen to show at State Fair on the State Fair entry website by August 10. All nominated and validated animals will be automatically listed as a choice option for entry registration.
8. Exhibitors will be required to bring the breed registration association paperwork to check-in at State Fair for animals wanting to show in a breed class. **The registration papers must show the exhibitor's name or a co-owner who is an immediate member of the exhibitor's family and is listed with the online nomination in Show Stock Manager. Family farm or ranch names will not be accepted.**

County Staff Responsibilities:

1. Submit an 840 EID tag order for beef and swine animal projects.
2. Schedule and publish weigh-in and/or tagging dates if offered in your county.
3. Request, distribute and collect DNA collectors for families. 840 EID tags should not be distributed without the premise ID being recorded in 4H Online. It is optional but recommended to record on the DNA envelope.
4. Inform families of the Youth for the Quality Care of Animals (YQCA) training options available to them (in person and online).
5. Collect all beef, swine, lamb, and goat DNA envelopes by June 15. Families will submit payment online in *Show Stock Manager*. Copy all DNA envelopes for your county records and mail all completed DNA envelopes to the Aksarben Stock Show office by **June 20**.
6. Remind families to confirm that the ear tattoo and/or identification tag matches the animal nomination submitted by June 15 for confirmation of legibility and/or accuracy.
7. Collect Premises ID numbers from exhibitors and input those into 4H Online.
8. Review and validate all online livestock nominations in *Show Stock Manager* for each exhibitor by **July 1**.
9. Input nomination edits in to Show Stock Manager for your families. Edits will be corrected by the Show Coordinator. For retags, directly notify Brandy Schulze bschulze@unl.edu and/or input the change in *Show Stock Manager*.
10. Inform families that all nominations have been validated and are available for entry at the Nebraska State Fair entry website <https://www.statefair.org/> when the system is open.

Additional Information

- County offices can accept paper ID sheets for their own record keeping but these **will not be accepted as a form of identification for State Fair.**
- There are entry limits for each of the individual species. Exhibitors cannot exhibit more than the following for each species to State Fair: Beef (5), Swine (6), Sheep (4), Goat (4), Poultry (6), Rabbit (6).



1508 Square Turn Blvd.
Norfolk, NE 68701

402.371.7313
FAX 402.371.0653
www.lenrd.org

Name of Camp: _____

Date of Camp: _____

NAME: _____ AGE: _____

ADDRESS: _____ COUNTY: _____

_____ PHONE _____

Do you reside in the District? Yes No Unsure

PARENTS NAME(S) _____

YEARS IN 4-H _____ SCHOOL _____ GRADE _____

LIST 4-H ACCOMPLISHMENTS AND ACHIEVEMENTS (Awards, other camps attended, etc.):

Why are you interested in attending this camp?
