



@fillmorecounty4h



www.remind.com/join/929dh3k  
Class Code: 929dh3kBS  
Class: Fillmore County 4-H

Fillmore County Extension  
402-759-3712  
[fillmore.unl.edu](http://fillmore.unl.edu)

Brandy VanDeWalle  
Extension Educator  
[brandy.vandewalle@unl.edu](mailto:brandy.vandewalle@unl.edu)

Alexis Schmidt  
4-H Assistant  
[alexis.schmidt@unl.edu](mailto:alexis.schmidt@unl.edu)

## UPCOMING PROGRAMMING



### DECEMBER

- DEC 1- Senior Scholarship Apps DUE
- DEC 1- K-2 After School 4-H, Shickley 2:30-3:30
- DEC 3- Achievement Recognition, 1:00-3:00
- DEC 6- 3-6 After School 4-H, Geneva, 1:30-3:00
- DEC 8- K-6 After School 4-H, Exeter, 2:00-3:00
- DEC 13- K-6 Library After School, Shickley, 3:30-4:30
- DEC 15- 3-6 After School 4-H, Shickley, 2:30-3:30
- DEC 20- K-2 After School 4-H, Geneva, 4:00-5:00
- DEC 25- Office Closed
- DEC 27- Mix in a Jar, Geneva, 10:30-12:00
- DEC 27- Hot Chocolate Workshop, Geneva, 1:00-2:30
- DEC 28- String Art Workshop, Geneva, 10:30-12:00



### JANUARY

- JAN 1- Office Closed
- JAN 2 Sewing Workshop, Geneva, 10:30-12:00
- JAN 3 Sewing Workshop, Geneva, 10:30-12:00
- JAN 8 Livestock Judging Meeting, Geneva, 6:30
- JAN 13 Beef Weigh-in, Geneva Vet Clinic, 8:00-10:30
- JAN 15- Office Closed

### ACHIEVEMENT RECOGNITION DECEMBER 3, 2023

On December 3, join us throughout the afternoon to pick up achievement application and Diamond Clover awards! This will be a part of the Sipp'n with Santa event put on by the Geneva Retail Services group. We will be serving festive hot chocolate and celebrating from 1:00-3:00 at the Extension Office.



## VOLUNTEER INFORMATION

4-H Enrollment is open for volunteers as well. Go to [v2.4honline.com](http://v2.4honline.com) to enroll. **NEW THIS YEAR!** Volunteers must complete a volunteer orientation



Nebraska 4-H has launched a new volunteer orientation. This online training serves as an introduction to the 4-H Youth Development program in Nebraska and covers a few essential topics for volunteers. While the orientation is required for new volunteers and those going through the re-screening process, any interested individuals, including current and prospective volunteers, are welcome to complete the course. Learn more at [4h.unl.edu/volunteer-orientation](http://4h.unl.edu/volunteer-orientation).



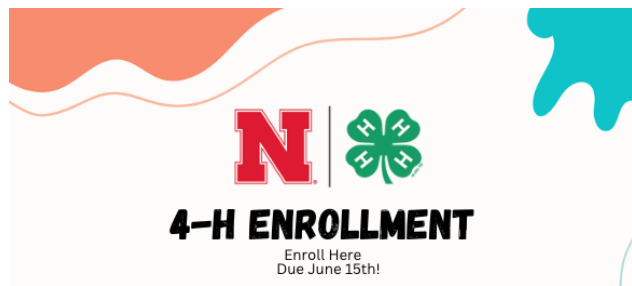
## Livestock Judging Club

Interested in learning more about livestock judging and meats judging? This program will meet once a month with hands-on learning opportunities. An informal introductory meeting will be held **January 8th at 6:30 p.m. at the Extension Office** to learn more about the program!

## We are hiring!

The Fillmore County Extension Office has an opening for a full-time office manager. Strong communication, organizational, and time management skills are essential plus knowledge in Word, Excel, and Quicken computer programs. A background in 4-H or Extension is beneficial. Role responsibilities can be found at [fillmore.unl.edu](http://fillmore.unl.edu). Resume, two letters of recommendation and application should be returned to the Fillmore County Extension office at 1340 G St., Geneva, NE 68361.

We are sad to see Holly go but are excited to see where her new opportunity takes her! If you would like to write her a thank you feel free to bring it to the office and we will make sure she gets it!



## 4-H ENROLLMENT OPEN [V2.4HONLINE.COM](http://V2.4HONLINE.COM)

4-H Enrollment has opened for 2024. The process has been simplified for you as families! All youth involved in 4-H must be enrolled in order to participate. There is an enrollment fee of \$10.00 per youth, \$20.00 per family. (Scholarships available, upon request.)

You will use the same username (email) and password as before. Enroll in 2024 4-H year. Update youth personal information and be sure to complete the page of authorizations.

For help enrolling go to [fillmore.unl.edu](http://fillmore.unl.edu) and under the Fillmore County 4-H tab click on 4-H Enrollment. It will guide you to the University's step by step picture guide.

## Market Beef Weigh-In

Market beef weigh-in for Fillmore County 4-H and FFA beef exhibitors will be Saturday, **January 13, from 8-10:30 AM** at the Geneva Vet Clinic. All market beef to be shown at the county fair must attend an official weigh-in. All market beef going to State Fair and/or AkSar-Ben must be DNA tested at weigh-in. Ear tag costs are covered by the 4-H Council. If you are unable to attend this weigh-in, call the Extension Office before January 12th so other arrangements can be made. Animals must be weighed in within one month of our weigh-in to be eligible for county fair. All market beef to be shown at the state fair will also need to have an EID tag. Like previous years, a time sheet has been created to help alleviate everyone coming at one time.



## 4-H Project Spotlight

We all know about the 4-H livestock, cooking and sewing projects. But with nearly 50 projects to choose from, there are likely some you aren't familiar with. These five often-overlooked projects offer real-world skills and unique experiences: [go.unl.edu/2nd8](http://go.unl.edu/2nd8).

In short, these five-often overlooked projects are:

1. Special plant science projects: Special Garden & Special Agronomy Projects
2. Financial (consumer education) Projects
3. Safety Projects
4. Citizenship Projects
5. Veterinary Science Projects



## Omaha Fashion Week

Nebraska 4-H is seeking applications for the Omaha Fashion Week 4-H Collection! Selected applicants will model their garments during the Omaha Fashion Week Student Night on Wednesday, Feb. 21. Applications are due Tuesday, Jan. 2. For more details or to apply, visit [4h.unl.edu/ofw](http://4h.unl.edu/ofw).

## After School 4-H

After School 4-H will be wrapping up before Holiday break! It has been a fun semester of hands-on learning after school! Be sure to check next month's newsletter, your email, and Facebook for next semester's times, dates, and themes.



## Special Gardening Project

As you begin making plans for 2024, be sure to check out the Special Garden Project. It offers a unique introduction to plant science.

Members are given seeds and guided through planting, growing, and harvesting seasons. Members can exhibit a cut flower or harvested vegetable at the fair if all goes well. Otherwise, youth can share their experience through a poster, story, or video exhibit.

Next year, members will work with the PRINCESS INDIA NASTURTIIUM. Visit [4h.unl.edu/spg](http://4h.unl.edu/spg) to learn more.

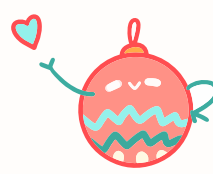
## Hixson-Lied College of Fine & Performing Arts

The Hixson-Lied College of Fine and Performing Arts is seeking applications for the 27th annual Nebraska Young Artist Awards.

The awards recognize 11th-grade students from Nebraska who are talented in visual art, dance, music, theater, and film and emerging media arts (which includes film, 3D models, interactive art, sound design and video games). These students exemplify the pinnacles of creativity in one of the fine and performing arts.

The deadline for applications in all categories is Dec. 15. Winning students will be invited to a special recognition day on April 3, 2024. Honored students and their parents will take tours of the arts facilities, attend classes, meet faculty and college students, have lunch and participate in an awards ceremony.

For more information, contact Chris Watson, at 402-472-0897 or [chris.watson@unl.edu](mailto:chris.watson@unl.edu).



# Winter Break Workshops



See details on page 2

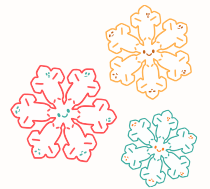
## December 27

Kindergarten- 5th grade- Mix in a jar  
6th grade and up- Hot Cocoa Bombs



## December 28

3rd grade and up- String Art



## December 29

Open hours  
Have a 4-H project that you want to try?  
Set up a time with Alexis and have fun creating!

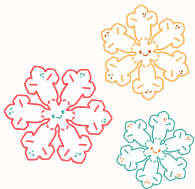


## January 3-4

Sewing Workshop  
\$10 fee- Scholarships available



**Register by December 15 to ensure there are enough materials**  
**Register for all workshops at:**



or by calling the office  
402-759-3712



*Payment for sewing workshops can be brought the day of.*

